

Anyone wishing to attend will need to call ahead at 913-684-0417 to reserve a seat as the meeting room has limited capacity. We are encouraging everyone to continue to view the meeting live via YouTube.

***Leavenworth County
Board of County Commissioners***

Regular Meeting Agenda
300 Walnut Street, Suite 225
Leavenworth, KS 66048
March 2, 2022
9:00 a.m.

- I. CALL TO ORDER
- II. PLEDGE OF ALLEGIANCE/MOMENT OF SILENCE
- III. ROLL CALL
- IV. PUBLIC COMMENT: Public Comment shall be limited to 15 minutes at the beginning of each meeting for agenda items **only** and limited to three minutes per person. Comments at the end of the meeting shall be open to any topic of general interest to the Board of County Commissioners and limited to five minutes per person. There should be no expectation of interaction by the Commission during this time.

Anyone wishing to make comments either on items on the agenda or not are encouraged to provide their comments in writing no later than 8:00 AM the Monday immediately preceding the meeting. These comments will be included in the agenda packet for everyone to access and review. This allows the Commission to have time to fully consider input and request follow up if needed prior to the meeting.
- V. ADMINISTRATIVE BUSINESS:
 - a) March for Meals Proclamation
- VI. CONSENT AGENDA: The items on the Consent Agenda are considered by staff to be routine business items. Approval of the items may be made by a single motion, seconded, and a majority vote with no separate discussion of any item listed. Should a member of the Governing Body desire to discuss any item, it will be removed from the Consent Agenda and considered separately.

- a) Approval of the minutes of February 23, 2022
- b) Approval of the schedule for the week March 7, 2022
- c) Approval of the check register
- d) Approve and sign the OCB's

VII. FORMAL BOARD ACTION:

- a) Consider a motion to approve Resolution 2022-7, a special use permit for Turkey Creek Cycles

VIII. PRESENTATIONS AND DISCUSSION ITEMS: presentations are materials of general concern where no action or vote is requested or anticipated.

IX. ADDITIONAL PUBLIC COMMENT IF NEEDED

ADJOURNMENT

LEAVENWORTH COUNTY COMMISSIONERS MEETING SCHEDULE

Monday, February 28, 2022

11:00 a.m. State of the City Address for the city of Basehor
• Falcon Lakes Clubhouse, 4605 Clubhouse Drive, Basehor, KS

Tuesday, March 1, 2022

Wednesday, March 2, 2022

9:00 a.m. Leavenworth County Commission meeting
• Commission Meeting Room, 300 Walnut, Leavenworth KS

Thursday, March 3, 2022

12:30 p.m. JCAB meeting
• Justice Center basement conference room

Friday, March 4, 2022

11:30 a.m. LCDC Annual Meeting
• Riverfront Community Center

ALL SUCH OTHER BUSINESS THAT MAY COME BEFORE THE COMMISSION

ALL MEETINGS ARE OPEN TO THE PUBLIC

COMMENTS SHOULD BE OF GENERAL INTEREST OF THE PUBLIC AND SUBJECT TO THE RULES OF DECORUM



A PROCLAMATION OF MARCH 2022 AS A MONTH CELEBRATING THE 50th ANNIVERSARY OF THE OLDER AMERICANS ACT NUTRITION PROGRAM

WHEREAS, fifty years ago, on March 22, 1972, President Nixon signed into law a measure that amended the Older Americans Act of 1965 to include a national nutrition program for individuals 60 years and older.

WHEREAS, for five decades, this landmark law has helped to fund community-based organizations – like Meals on Wheels – and it is still the only federal program designed specifically to meet the nutritional and social needs of older adults.

WHEREAS, Meals on Wheels programs – both congregate and home-delivered, in Leavenworth County, Kansas have served our communities admirably for 50 years; and

WHEREAS, volunteers for Meals on Wheels programs in Leavenworth County, Kansas are the backbone of the program and they not only deliver nutritious meals to seniors and individuals with disabilities who are at significant risk of hunger and isolation, but also caring concern and attention to their welfare; and

WHEREAS, Meals on Wheels program in Leavenworth County, Kansas provides nutritious meals to seniors that help them maintain their health and independence, thereby helping to prevent unnecessary falls, hospitalizations and/or premature institutionalization; and

WHEREAS, Meals on Wheels programs in Leavenworth County, Kansas deserve recognition for the heroic contributions and essential services they have provided amid the COVID-19 pandemic and will continue to provide to local communities, our State and our Nation long after it is over.

NOW, THEREFORE, I, MICHAEL SMITH, as Chairman of the Leavenworth County Board of Commissioners do hereby proclaim March 2022 as a month celebrating the 50th anniversary of the Older Americans Act Nutrition program and urge every community member to take this month to honor our Meals on Wheels programs, the seniors they serve and the volunteers who care for them. Our recognition of, and involvement in, this national celebration can enrich our entire community and help combat senior hunger and isolation in America.

Dated this 2nd day of March, 2022

Chairman, Leavenworth County Board of Commissioners

*****February 23, 2022 *****

The Board of County Commissioners met in a regular session on Wednesday, February 23, 2022. Commissioner Mike Smith, Commissioner Culbertson, Commissioner Kaaz, Commissioner Doug Smith and Commissioner Mike Stieben are present; Also present: Mark Loughry, County Administrator; David Van Parys, Senior County Counselor; Bill Noll, Infrastructure and Construction Services; Connie Harmon, Council on Aging Director; Tammy Saldivar, Solid Waste Director; Larry Malbrough, Information Systems Director; Bob Weber, County Appraiser; Aaron Yoakum, Buildings and Grounds Director; Keith Rickard, The Guidance Center Director; John Richmeier, Leavenworth Times

Residents: AW Himpel, Joe Herring, John Matthews, Dennis Taylor

PUBLIC COMMENT:

There were no public comments.

ADMINISTRATIVE BUSINESS:

Mark Loughry reported the city of Tonganoxie is withdrawing the agreement for the Kansas BASE grants and are pursuing another project.

Commissioner Culbertson reported on the fire at the Easton landfill indicating a cease and desist order has been issued and they can not bring anymore debris on sight.

A motion was made by Commissioner Culbertson and seconded by Commissioner Doug Smith to accept the consent agenda for Wednesday, February 23, 2022 as presented.

Motion passed, 4-1, Commissioner Kaaz voting nay.

Mark Loughry presented an updated Leavenworth County Employee Handbook.

A motion was made by Commissioner Kaaz and seconded by Commissioner Stieben to approve the Leavenworth County Employee Handbook.

Motion passed, 5-0.

Tammy Saldivar requested approval of the 2022 Solid Waste Committee members.

A motion was made by Commissioner Doug Smith and seconded by Commissioner Culbertson approve the Solid Waste Committee members.

Motion passed, 5-0.

Ms. Saldivar requested approval of Resolution 2022-6, the Solid Waste 5-year management plan.

A motion was made by Commissioner Kaaz and seconded by Commissioner Doug Smith to approve Resolution 2022-6, adopting the 5-year Solid Waste management plan.

Motion passed, 5-0.

Larry Malbrough requested approval of a contract with Insight Direct for the purchase of Toughbooks for the EMS department.

A motion was made by Commissioner Culbertson and seconded by Commissioner Mike Smith to accept the quote from Insight Direct for the purchase of Toughbooks in the amount of \$37,624.60.

Motion passed, 5-0.

Aaron Yoakum requested approval to award bid to Sands Construction for the Crisis Stabilization remodel for the Guidance Center at the Cushing building.

A motion was made by Commissioner Culbertson and seconded by Commissioner Kaaz to award the bid to Sands Construction for the Crisis Stabilization remodel for the Guidance Center area of the Cushing building in an amount not to exceed \$900,000.00.

Motion passed, 5-0.

Bill Noll requested approval of an agreement with Rural Water District #7 for the water line relocation on the 158th St. project.

A motion was made by Commissioner Doug Smith and seconded by Commissioner Culbertson to approve the chairman to sign an agreement with Rural Water District #7 for relocation of water line on the 158th St. project not to exceed \$22,000.00.

Motion passed, 5-0.

Mr. Noll requested approval of the proposal from MHS for bridge F-46 replacement construction and inspection services.

A motion was made by Commissioner Doug Smith and seconded by Commissioner Stieben to approve the bridge replacement of bridge F-46 for construction and inspection services to MHS not to exceed \$113,697.08.

Motion passed, 5-0.

Mr. Noll requested approval of the proposal from MHS for bridge E-18 construction and inspection services.

A motion was made by Commissioner Culbertson and seconded by Commissioner Mike Smith to award bridge E-18 replacement construction and inspection services to MHS in an amount not to exceed \$165,596.36.

Motion passed, 5-0.

Connie Harmon requested approval for the Council on Aging to enter a contract with Accessible Solution for a cloud- based client software.

A motion was made by Commissioner Kaaz and seconded by Commissioner Mike Smith to approve the Council on Aging to enter a contract with Accessible Solutions for a cloud-based client software.

Motion passed, 5-0.

Ms. Harmon discussed a new logo design for the Council on Aging.

Bob Weber presented the quarterly report for the Appraiser's Office.

Commissioner Doug Smith participated in the MARC meeting and will be attending the Basehor City Council meeting, the Fairmount Township meeting and the State of the City meeting in Basehor.

Commissioner Stieben met with the city clerk of Linwood indicating improvements are being made to the city water lines through grants. He has also scheduled a town hall meeting with the citizens of Alexandria Township in April.

Commissioner Culbertson attended the Leavenworth City Commission meeting. He met with the city of Easton on a parcel that was a FEMA buyout.

Commissioner Kaaz participated in the Workforce Partnership meeting. She indicated she will listen to the KCATA meeting this afternoon and will officially join in the meetings in March as well as the NEK-CAP meetings.

Commissioner Mike Smith will attend the Lansing City Council special meeting. He indicated the city of Lansing's 4th of July celebration will be at Towne Center due to construction at Bernard Park.

***A motion was made by Commissioner Kaaz and seconded by Commissioner Doug Smith to adjourn.
Motion passed, 5-0.***

The Board adjourned at 10:15 a.m.

LEAVENWORTH COUNTY COMMISSIONERS MEETING SCHEDULE

Monday, March 7, 2022

Tuesday, March 8, 2022

Wednesday, March 9, 2022

9:00 a.m. Leavenworth County Commission meeting
 • Commission Meeting Room, 300 Walnut, Leavenworth KS

Thursday, March 10, 2022

12:00 p.m. LCDC meeting via Zoom

Friday, March 11, 2022

ALL SUCH OTHER BUSINESS THAT MAY COME BEFORE THE COMMISSION

ALL MEETINGS ARE OPEN TO THE PUBLIC

COMMENTS SHOULD BE OF GENERAL INTEREST OF THE PUBLIC AND SUBJECT TO THE RULES OF DECORUM

START DATE: 02/19/2022 END DATE: 02/25/2022

TYPES OF CHECKS SELECTED: * ALL TYPES

			P.O.NUMBER	CHECK#						
1513	ADVANCED AUTOMOTIVE	ADVANCED AUTOMOTIVE	325903	97000 AP	02/22/2022	2-001-5-05-213	EMS VEH MAINT/SUPPLIES		144.38	
1513	ADVANCED AUTOMOTIVE	ADVANCED AUTOMOTIVE	325903	97000 AP	02/22/2022	2-001-5-05-213	EMS VEH MAINT/SUPPLIES		147.32	
1513	ADVANCED AUTOMOTIVE	ADVANCED AUTOMOTIVE	325903	97000 AP	02/22/2022	2-001-5-05-213	EMS VEH MAINT/SUPPLIES		1,497.89	
1513	ADVANCED AUTOMOTIVE	ADVANCED AUTOMOTIVE	325903	97000 AP	02/22/2022	2-001-5-05-213	EMS VEH MAINT/SUPPLIES		118.74	
1513	ADVANCED AUTOMOTIVE	ADVANCED AUTOMOTIVE	325903	97000 AP	02/22/2022	2-001-5-05-213	EMS VEH MAINT/SUPPLIES		532.39	
1513	ADVANCED AUTOMOTIVE	ADVANCED AUTOMOTIVE	325903	97000 AP	02/22/2022	2-001-5-05-213	EMS VEH MAINT/SUPPLIES		627.39	
1513	ADVANCED AUTOMOTIVE	ADVANCED AUTOMOTIVE	325903	97000 AP	02/22/2022	2-001-5-05-306	EMS VEH MAINT/SUPPLIES		55.35	
1513	ADVANCED AUTOMOTIVE	ADVANCED AUTOMOTIVE	325903	97000 AP	02/22/2022	2-001-5-05-306	EMS VEH MAINT/SUPPLIES		363.98	
1513	ADVANCED AUTOMOTIVE	ADVANCED AUTOMOTIVE	325903	97000 AP	02/22/2022	2-001-5-05-306	EMS VEH MAINT/SUPPLIES		1,684.56	
1513	ADVANCED AUTOMOTIVE	ADVANCED AUTOMOTIVE	325903	97000 AP	02/22/2022	2-001-5-05-306	EMS VEH MAINT/SUPPLIES		383.60	
1513	ADVANCED AUTOMOTIVE	ADVANCED AUTOMOTIVE	325903	97000 AP	02/22/2022	2-001-5-05-306	EMS VEH MAINT/SUPPLIES		781.65	
1513	ADVANCED AUTOMOTIVE	ADVANCED AUTOMOTIVE	325903	97000 AP	02/22/2022	2-001-5-05-306	EMS VEH MAINT/SUPPLIES		1,439.07	
							*** VENDOR	1513 TOTAL		7,776.32
20588	ADVANTAGE	ADVANTAGE PRINTING	325904	97001 AP	02/22/2022	2-001-5-07-301	ACCT 132 SHERIFF-RED INK		12.00	
20588	ADVANTAGE	ADVANTAGE PRINTING	326030	97103 AP	02/25/2022	2-001-5-19-301	DIST CT ACCT 341 CHECKS FOR CO		268.00	
							*** VENDOR	20588 TOTAL		280.00
249	AMBERWELL	ATCHISON HOSPITAL	325906	97003 AP	02/22/2022	2-001-5-07-206	LEAV CO HSERIFF EMPLOYMENT PHY		560.00	
249	AMBERWELL	ATCHISON HOSPITAL	325906	97003 AP	02/22/2022	2-001-5-28-212	LEAV CO HR TESTING		937.00	
							*** VENDOR	249 TOTAL		1,497.00
10985	ARAMARK CO	ARAMARK CO	325907	97004 AP	02/22/2022	2-001-5-05-350	1285248 THREE SEASON JACKETS		89.97	
21036	ARROWHEAD	ARROWHEAD SCIENTIFIC INC	326031	97104 AP	02/25/2022	2-001-5-07-251	SHERIFF:EVIDENCE SUPPLIES		206.10	
2541	BEST PLUMBING SPECIA	BEST PLUMBING SPECIALTIES,INC	325908	97005 AP	02/22/2022	2-001-5-07-357	65483 JAIL PLUMBING SUPPLIES		303.15	
1523	BOB BARKER	BOB BARKER CO INC	325909	97006 AP	02/22/2022	2-001-5-07-359	LEAKS4 JAIL SUPPLIES		128.04	
1523	BOB BARKER	BOB BARKER CO INC	325909	97006 AP	02/22/2022	2-001-5-07-359	LEAKS4 JAIL SUPPLIES		356.00	
							*** VENDOR	1523 TOTAL		484.04
23537	BOUND TREE	BOUND TREE MEDICAL LLC	325911	97008 AP	02/22/2022	2-001-5-05-381	113712 FIELD SUPPLIES EMS		1,108.40	
283	BUSETTI ROBERT	ROBERT BUSETTI	326034	97107 AP	02/25/2022	2-001-5-07-219	FEBRUARY DENTIS FEE FOR INMATE		350.00	
36	CAHILL PAT	PATRICK J CAHILL	325912	97009 AP	02/22/2022	2-001-5-09-231	COURT APPOINTED ATTORNEY		3,000.00	
25101	CANON U S	CANON U S A INC	325913	97010 AP	02/22/2022	2-001-5-19-204	1865950 DIST CT CLERKS FRONT C		272.02	
362	CASAD BENJAMIN	BENJAMIN CASAD	325914	97011 AP	02/22/2022	2-001-5-09-231	COURT APPOINTED ATTORNEY		3,000.00	
24545	CDW GOVERN	CDW GOVERNMENT INC	325915	97012 AP	02/22/2022	2-001-5-18-301	3773122 IS - RJ45 CONNECTORS		101.70	
5637	CLEARWATER ENTERPRIS	CLEARWATER ENTERPRISES,LLC	325917	97014 AP	02/22/2022	2-001-5-05-215	20642-0317B242442201 GAS SERVI		553.70	
5637	CLEARWATER ENTERPRIS	CLEARWATER ENTERPRISES,LLC	325917	97014 AP	02/22/2022	2-001-5-14-220	CTHSE GAS SVC 20642-1201903995		3,947.70	
5637	CLEARWATER ENTERPRIS	CLEARWATER ENTERPRISES,LLC	325917	97014 AP	02/22/2022	2-001-5-32-392	GAS SERVICE 20642-120192965022		6,615.37	
							*** VENDOR	5637 TOTAL		11,116.77
648	COMMERCE BANK-COMMER	COMMERCE BANK-COMMERCIAL CARDS	325989	97066 AP	02/24/2022	2-001-5-01-203	BOCC CITY OF BASEHOR STATE OF		30.00	
648	COMMERCE BANK-COMMER	COMMERCE BANK-COMMERCIAL CARDS	325989	97066 AP	02/24/2022	2-001-5-02-212	IRON MOUNTAIN SHREDDING (426.5		27.28	
648	COMMERCE BANK-COMMER	COMMERCE BANK-COMMERCIAL CARDS	325989	97066 AP	02/24/2022	2-001-5-02-301	MAILROOM,ELECTION,CLERK SUPPLI		63.72	
648	COMMERCE BANK-COMMER	COMMERCE BANK-COMMERCIAL CARDS	325989	97066 AP	02/24/2022	2-001-5-02-301	MAILROOM,ELECTION,CLERK SUPPLI		29.40	
648	COMMERCE BANK-COMMER	COMMERCE BANK-COMMERCIAL CARDS	325989	97066 AP	02/24/2022	2-001-5-02-301	MAILROOM,ELECTION,CLERK SUPPLI		22.45	
648	COMMERCE BANK-COMMER	COMMERCE BANK-COMMERCIAL CARDS	325989	97066 AP	02/24/2022	2-001-5-02-301	MAILROOM,ELECTION,CLERK SUPPLI		21.50	
648	COMMERCE BANK-COMMER	COMMERCE BANK-COMMERCIAL CARDS	325989	97066 AP	02/24/2022	2-001-5-02-301	MAILROOM,ELECTION,CLERK SUPPLI		19.78	
648	COMMERCE BANK-COMMER	COMMERCE BANK-COMMERCIAL CARDS	325989	97066 AP	02/24/2022	2-001-5-02-301	MAILROOM,ELECTION,CLERK SUPPLI		51.48	
648	COMMERCE BANK-COMMER	COMMERCE BANK-COMMERCIAL CARDS	325989	97066 AP	02/24/2022	2-001-5-02-301	MAILROOM,ELECTION,CLERK SUPPLI		.92	
648	COMMERCE BANK-COMMER	COMMERCE BANK-COMMERCIAL CARDS	325989	97066 AP	02/24/2022	2-001-5-02-301	HARASSMENT TRAINING FOR SUP/EM		45.70	
648	COMMERCE BANK-COMMER	COMMERCE BANK-COMMERCIAL CARDS	325989	97066 AP	02/24/2022	2-001-5-03-230	NATIONWIDE - BOND FOR JVP TO 2		142.00	
648	COMMERCE BANK-COMMER	COMMERCE BANK-COMMERCIAL CARDS	325989	97066 AP	02/24/2022	2-001-5-04-211	FUEL,PFA BOOTH,PFA FLYERS TO M		11.36	
648	COMMERCE BANK-COMMER	COMMERCE BANK-COMMERCIAL CARDS	325989	97066 AP	02/24/2022	2-001-5-04-212	FUEL,PFA BOOTH,PFA FLYERS TO M		25.00	
648	COMMERCE BANK-COMMER	COMMERCE BANK-COMMERCIAL CARDS	325989	97066 AP	02/24/2022	2-001-5-04-302	FUEL,PFA BOOTH,PFA FLYERS TO M		185.35	
648	COMMERCE BANK-COMMER	COMMERCE BANK-COMMERCIAL CARDS	325989	97066 AP	02/24/2022	2-001-5-05-203	EMS FIELD SUPPLY,RED WASTE,OFF		450.00	
648	COMMERCE BANK-COMMER	COMMERCE BANK-COMMERCIAL CARDS	325989	97066 AP	02/24/2022	2-001-5-05-212	EMS FIELD SUPPLY,RED WASTE,OFF		49.95	
648	COMMERCE BANK-COMMER	COMMERCE BANK-COMMERCIAL CARDS	325989	97066 AP	02/24/2022	2-001-5-05-215	TONGANOXIE CITY WATER - EMS 91		70.29	

TYPES OF CHECKS SELECTED: * ALL TYPES

			P.O.NUMBER	CHECK#					
648	COMMERCE BANK-COMMER	COMMERCE BANK-COMMERCIAL CARDS	325989	97066 AP	02/24/2022	2-001-5-05-216	EMS FIELD SUPPLY,RED WASTE,OFF	474.19	
648	COMMERCE BANK-COMMER	COMMERCE BANK-COMMERCIAL CARDS	325989	97066 AP	02/24/2022	2-001-5-05-280	2-14 MIDWEST MOBILE RADIO 211-	402.00	
648	COMMERCE BANK-COMMER	COMMERCE BANK-COMMERCIAL CARDS	325989	97066 AP	02/24/2022	2-001-5-05-282	EMS FIELD SUPPLY,RED WASTE,OFF	346.01	
648	COMMERCE BANK-COMMER	COMMERCE BANK-COMMERCIAL CARDS	325989	97066 AP	02/24/2022	2-001-5-05-284	EMS VEH/BLDG MAINT,FIELD/OFC S	12.39	
648	COMMERCE BANK-COMMER	COMMERCE BANK-COMMERCIAL CARDS	325989	97066 AP	02/24/2022	2-001-5-05-286	EMS FIELD SUPPLY,RED WASTE,OFF	230.98	
648	COMMERCE BANK-COMMER	COMMERCE BANK-COMMERCIAL CARDS	325989	97066 AP	02/24/2022	2-001-5-05-301	EMS FIELD SUPPLY,RED WASTE,OFF	315.58	
648	COMMERCE BANK-COMMER	COMMERCE BANK-COMMERCIAL CARDS	325989	97066 AP	02/24/2022	2-001-5-05-301	EMS VEH/BLDG MAINT,FIELD/OFC S	24.37	
648	COMMERCE BANK-COMMER	COMMERCE BANK-COMMERCIAL CARDS	325989	97066 AP	02/24/2022	2-001-5-05-306	EMS VEH/BLDG MAINT,FIELD/OFC S	237.85	
648	COMMERCE BANK-COMMER	COMMERCE BANK-COMMERCIAL CARDS	325989	97066 AP	02/24/2022	2-001-5-05-306	EMS VEH/BLDG MAINT,FIELD/OFC S	80.20	
648	COMMERCE BANK-COMMER	COMMERCE BANK-COMMERCIAL CARDS	325989	97066 AP	02/24/2022	2-001-5-05-306	EMS VEH/BLDG MAINT,FIELD/OFC S	181.87	
648	COMMERCE BANK-COMMER	COMMERCE BANK-COMMERCIAL CARDS	325989	97066 AP	02/24/2022	2-001-5-05-350	EMS VEH/BLDG MAINT,FIELD/OFC S	33.66	
648	COMMERCE BANK-COMMER	COMMERCE BANK-COMMERCIAL CARDS	325989	97066 AP	02/24/2022	2-001-5-05-350	EMS VEH/BLDG MAINT,FIELD/OFC S	4.54	
648	COMMERCE BANK-COMMER	COMMERCE BANK-COMMERCIAL CARDS	325989	97066 AP	02/24/2022	2-001-5-05-381	EMS FIELD SUPPLY,RED WASTE,OFF	14,305.15	
648	COMMERCE BANK-COMMER	COMMERCE BANK-COMMERCIAL CARDS	325989	97066 AP	02/24/2022	2-001-5-05-381	EMS VEH/BLDG MAINT,FIELD/OFC S	150.28	
648	COMMERCE BANK-COMMER	COMMERCE BANK-COMMERCIAL CARDS	325989	97066 AP	02/24/2022	2-001-5-05-383	EMS VEH/BLDG MAINT,FIELD/OFC S	89.98	
648	COMMERCE BANK-COMMER	COMMERCE BANK-COMMERCIAL CARDS	325989	97066 AP	02/24/2022	2-001-5-05-383	EMS VEH/BLDG MAINT,FIELD/OFC S	201.16	
648	COMMERCE BANK-COMMER	COMMERCE BANK-COMMERCIAL CARDS	325989	97066 AP	02/24/2022	2-001-5-06-202	PLANNING COMMISSION, OFFICE SU	128.86	
648	COMMERCE BANK-COMMER	COMMERCE BANK-COMMERCIAL CARDS	325989	97066 AP	02/24/2022	2-001-5-06-202	PLANNING COMMISSION	8.37	
648	COMMERCE BANK-COMMER	COMMERCE BANK-COMMERCIAL CARDS	325989	97066 AP	02/24/2022	2-001-5-06-220	FLEETHOSTER MARCH SERVICE	38.00	
648	COMMERCE BANK-COMMER	COMMERCE BANK-COMMERCIAL CARDS	325989	97066 AP	02/24/2022	2-001-5-06-301	PLANNING COMMISSION, OFFICE SU	29.33	
648	COMMERCE BANK-COMMER	COMMERCE BANK-COMMERCIAL CARDS	325989	97066 AP	02/24/2022	2-001-5-07-202	LVSO TNG,PRISONER HEALTH,UNIFO	250.00	
648	COMMERCE BANK-COMMER	COMMERCE BANK-COMMERCIAL CARDS	325989	97066 AP	02/24/2022	2-001-5-07-202	LVSO TNG,PRISONER HEALTH,UNIFO	720.00	
648	COMMERCE BANK-COMMER	COMMERCE BANK-COMMERCIAL CARDS	325989	97066 AP	02/24/2022	2-001-5-07-203	LVSO TNG,PRISONER HEALTH,UNIFO	234.00	
648	COMMERCE BANK-COMMER	COMMERCE BANK-COMMERCIAL CARDS	325989	97066 AP	02/24/2022	2-001-5-07-208	WASTE MGMT - SHF DUMPSTER	467.99	
648	COMMERCE BANK-COMMER	COMMERCE BANK-COMMERCIAL CARDS	325989	97066 AP	02/24/2022	2-001-5-07-208	2-14 MIDWEST MOBILE RADIO 211-	1,640.00	
648	COMMERCE BANK-COMMER	COMMERCE BANK-COMMERCIAL CARDS	325989	97066 AP	02/24/2022	2-001-5-07-210	AT&T SHF 1313	244.73	
648	COMMERCE BANK-COMMER	COMMERCE BANK-COMMERCIAL CARDS	325989	97066 AP	02/24/2022	2-001-5-07-219	LVSO TNG,PRISONER HEALTH,UNIFO	377.66	
648	COMMERCE BANK-COMMER	COMMERCE BANK-COMMERCIAL CARDS	325989	97066 AP	02/24/2022	2-001-5-07-301	LVSO:TECH,OFC SUPPLY/EQUIP,POL	137.42	
648	COMMERCE BANK-COMMER	COMMERCE BANK-COMMERCIAL CARDS	325989	97066 AP	02/24/2022	2-001-5-07-303	LVSO:TECH,OFC SUPPLY/EQUIP,POL	20.78	
648	COMMERCE BANK-COMMER	COMMERCE BANK-COMMERCIAL CARDS	325989	97066 AP	02/24/2022	2-001-5-07-303	LVSO TNG,PRISONER HEALTH,UNIFO	19.98	
648	COMMERCE BANK-COMMER	COMMERCE BANK-COMMERCIAL CARDS	325989	97066 AP	02/24/2022	2-001-5-07-305	LVSO:TECH,OFC SUPPLY/EQUIP,POL	200.97	
648	COMMERCE BANK-COMMER	COMMERCE BANK-COMMERCIAL CARDS	325989	97066 AP	02/24/2022	2-001-5-07-350	LVSO:TECH,OFC SUPPLY/EQUIP,POL	61.75	
648	COMMERCE BANK-COMMER	COMMERCE BANK-COMMERCIAL CARDS	325989	97066 AP	02/24/2022	2-001-5-07-350	LVSO TNG,PRISONER HEALTH,UNIFO	70.10	
648	COMMERCE BANK-COMMER	COMMERCE BANK-COMMERCIAL CARDS	325989	97066 AP	02/24/2022	2-001-5-07-350	LVSO TNG,PRISONER HEALTH,UNIFO	220.18	
648	COMMERCE BANK-COMMER	COMMERCE BANK-COMMERCIAL CARDS	325989	97066 AP	02/24/2022	2-001-5-07-353	LVSO:TECH,OFC SUPPLY/EQUIP,POL	143.51	
648	COMMERCE BANK-COMMER	COMMERCE BANK-COMMERCIAL CARDS	325989	97066 AP	02/24/2022	2-001-5-07-355	LVSO:TECH,OFC SUPPLY/EQUIP,POL	13.24	
648	COMMERCE BANK-COMMER	COMMERCE BANK-COMMERCIAL CARDS	325989	97066 AP	02/24/2022	2-001-5-07-356	LVSO:TECH,OFC SUPPLY/EQUIP,POL	341.88	
648	COMMERCE BANK-COMMER	COMMERCE BANK-COMMERCIAL CARDS	325989	97066 AP	02/24/2022	2-001-5-07-356	LVSO TNG,PRISONER HEALTH,UNIFO	147.53	
648	COMMERCE BANK-COMMER	COMMERCE BANK-COMMERCIAL CARDS	325989	97066 AP	02/24/2022	2-001-5-07-357	LVSO:TECH,OFC SUPPLY/EQUIP,POL	99.96	
648	COMMERCE BANK-COMMER	COMMERCE BANK-COMMERCIAL CARDS	325989	97066 AP	02/24/2022	2-001-5-07-362	LVSO:TECH,OFC SUPPLY/EQUIP,POL	1,363.32	
648	COMMERCE BANK-COMMER	COMMERCE BANK-COMMERCIAL CARDS	325989	97066 AP	02/24/2022	2-001-5-07-363	LVSO TNG,PRISONER HEALTH,UNIFO	120.00	
648	COMMERCE BANK-COMMER	COMMERCE BANK-COMMERCIAL CARDS	325989	97066 AP	02/24/2022	2-001-5-11-202	CO ATTY - KS NARCOTICS CONF	250.00	
648	COMMERCE BANK-COMMER	COMMERCE BANK-COMMERCIAL CARDS	325989	97066 AP	02/24/2022	2-001-5-11-203	KCDAA MEMBERSHIP - THOMPSON	480.00	
648	COMMERCE BANK-COMMER	COMMERCE BANK-COMMERCIAL CARDS	325989	97066 AP	02/24/2022	2-001-5-11-213	CO ATTY - HOTEL FOR WITNESS	119.00	
648	COMMERCE BANK-COMMER	COMMERCE BANK-COMMERCIAL CARDS	325989	97066 AP	02/24/2022	2-001-5-11-253	FLEETHOSTER MARCH SERVICE	19.95	
648	COMMERCE BANK-COMMER	COMMERCE BANK-COMMERCIAL CARDS	325989	97066 AP	02/24/2022	2-001-5-11-301	CO ATTY: OFFICE SUPPLIES/EQUIP	1,932.04	
648	COMMERCE BANK-COMMER	COMMERCE BANK-COMMERCIAL CARDS	325989	97066 AP	02/24/2022	2-001-5-11-308	CO ATTY: OFFICE SUPPLIES/EQUIP	126.94	
648	COMMERCE BANK-COMMER	COMMERCE BANK-COMMERCIAL CARDS	325989	97066 AP	02/24/2022	2-001-5-14-212	HARASSMENT TRAINING FOR SUP/EM	390.00	
648	COMMERCE BANK-COMMER	COMMERCE BANK-COMMERCIAL CARDS	325989	97066 AP	02/24/2022	2-001-5-14-212	HARASSMENT TRAINING FOR SUP/EM	350.00	
648	COMMERCE BANK-COMMER	COMMERCE BANK-COMMERCIAL CARDS	325989	97066 AP	02/24/2022	2-001-5-14-220	BG CARD-PUMP WIRING,JC FLOOR/M	220.16	
648	COMMERCE BANK-COMMER	COMMERCE BANK-COMMERCIAL CARDS	325989	97066 AP	02/24/2022	2-001-5-14-247	IRON MOUNTAIN SHREDDING (426.5	23.00	
648	COMMERCE BANK-COMMER	COMMERCE BANK-COMMERCIAL CARDS	325989	97066 AP	02/24/2022	2-001-5-14-301	MAILROOM,ELECTION,CLERK SUPPLI	85.44	

START DATE: 02/19/2022 END DATE: 02/25/2022

TYPES OF CHECKS SELECTED: * ALL TYPES

			P.O.NUMBER	CHECK#						
648	COMMERCE BANK-COMMER	COMMERCE BANK-COMMERCIAL CARDS	325989	97066 AP	02/24/2022	2-001-5-14-301	MAILROOM,ELECTION,CLERK SUPPLI		345.27	
648	COMMERCE BANK-COMMER	COMMERCE BANK-COMMERCIAL CARDS	325989	97066 AP	02/24/2022	2-001-5-14-301	MAILROOM,ELECTION,CLERK SUPPLI		144.99	
648	COMMERCE BANK-COMMER	COMMERCE BANK-COMMERCIAL CARDS	325989	97066 AP	02/24/2022	2-001-5-14-332	FUEL - EOC		31.20	
648	COMMERCE BANK-COMMER	COMMERCE BANK-COMMERCIAL CARDS	325989	97066 AP	02/24/2022	2-001-5-14-332	LVS0 TNG,PRISONER HEALTH,UNIFO		54.35	
648	COMMERCE BANK-COMMER	COMMERCE BANK-COMMERCIAL CARDS	325989	97066 AP	02/24/2022	2-001-5-18-213	AT&T FOR ALARM SYSTEMS		1,368.33	
648	COMMERCE BANK-COMMER	COMMERCE BANK-COMMERCIAL CARDS	325989	97066 AP	02/24/2022	2-001-5-19-220	IRON MOUNTAIN SHREDDING (426.5		132.12	
648	COMMERCE BANK-COMMER	COMMERCE BANK-COMMERCIAL CARDS	325989	97066 AP	02/24/2022	2-001-5-19-220	IRON MOUNTAIN SHREDDING (426.5		132.12	
648	COMMERCE BANK-COMMER	COMMERCE BANK-COMMERCIAL CARDS	325989	97066 AP	02/24/2022	2-001-5-19-301	TW - SENTENCING GUIDELINES		697.00	
648	COMMERCE BANK-COMMER	COMMERCE BANK-COMMERCIAL CARDS	325989	97066 AP	02/24/2022	2-001-5-19-301	SC- DIST CT TECH EQUIPMENT CR2		169.98	
648	COMMERCE BANK-COMMER	COMMERCE BANK-COMMERCIAL CARDS	325989	97066 AP	02/24/2022	2-001-5-19-301	DIST CT CLERK OFFICE SUPPLIES,		66.50	
648	COMMERCE BANK-COMMER	COMMERCE BANK-COMMERCIAL CARDS	325989	97066 AP	02/24/2022	2-001-5-28-301	IRON MOUNTAIN SHREDDING (426.5		11.50	
648	COMMERCE BANK-COMMER	COMMERCE BANK-COMMERCIAL CARDS	325989	97066 AP	02/24/2022	2-001-5-31-230	FLEETHOSTER MARCH SERVICE		59.85	
648	COMMERCE BANK-COMMER	COMMERCE BANK-COMMERCIAL CARDS	325989	97066 AP	02/24/2022	2-001-5-31-297	BG CARD-PUMP WIRING,JC FLOOR/M		65.00	
648	COMMERCE BANK-COMMER	COMMERCE BANK-COMMERCIAL CARDS	325989	97066 AP	02/24/2022	2-001-5-31-301	BG CARD-PUMP WIRING,JC FLOOR/M		199.69	
648	COMMERCE BANK-COMMER	COMMERCE BANK-COMMERCIAL CARDS	325989	97066 AP	02/24/2022	2-001-5-31-312	HERKEN:SPEC BLDG,JC		374.34	
648	COMMERCE BANK-COMMER	COMMERCE BANK-COMMERCIAL CARDS	325989	97066 AP	02/24/2022	2-001-5-31-316	BG CARD-PUMP WIRING,JC FLOOR/M		99.99	
648	COMMERCE BANK-COMMER	COMMERCE BANK-COMMERCIAL CARDS	325989	97066 AP	02/24/2022	2-001-5-31-316	HERKEN:SPEC BLDG,JC		126.17	
648	COMMERCE BANK-COMMER	COMMERCE BANK-COMMERCIAL CARDS	325989	97066 AP	02/24/2022	2-001-5-31-317	HERKEN:SPEC BLDG,JC		12.58	
648	COMMERCE BANK-COMMER	COMMERCE BANK-COMMERCIAL CARDS	325989	97066 AP	02/24/2022	2-001-5-31-384	BG CARD-PUMP WIRING,JC FLOOR/M		442.67	
648	COMMERCE BANK-COMMER	COMMERCE BANK-COMMERCIAL CARDS	325989	97066 AP	02/24/2022	2-001-5-31-390	BG CARD-PUMP WIRING,JC FLOOR/M		582.35	
648	COMMERCE BANK-COMMER	COMMERCE BANK-COMMERCIAL CARDS	325989	97066 AP	02/24/2022	2-001-5-31-391	BG CARD-PUMP WIRING,JC FLOOR/M		502.10	
648	COMMERCE BANK-COMMER	COMMERCE BANK-COMMERCIAL CARDS	325989	97066 AP	02/24/2022	2-001-5-32-209	BG CARD-PUMP WIRING,JC FLOOR/M		1,899.00	
648	COMMERCE BANK-COMMER	COMMERCE BANK-COMMERCIAL CARDS	325989	97066 AP	02/24/2022	2-001-5-32-296	BG CARD-PUMP WIRING,JC FLOOR/M		2,686.60	
648	COMMERCE BANK-COMMER	COMMERCE BANK-COMMERCIAL CARDS	325989	97066 AP	02/24/2022	2-001-5-32-297	BG CARD-PUMP WIRING,JC FLOOR/M		319.52	
648	COMMERCE BANK-COMMER	COMMERCE BANK-COMMERCIAL CARDS	325989	97066 AP	02/24/2022	2-001-5-32-391	BG CARD-PUMP WIRING,JC FLOOR/M		807.23	
648	COMMERCE BANK-COMMER	COMMERCE BANK-COMMERCIAL CARDS	325989	97066 AP	02/24/2022	2-001-5-32-391	HERKEN:SPEC BLDG,JC		1,596.49	
648	COMMERCE BANK-COMMER	COMMERCE BANK-COMMERCIAL CARDS	325989	97066 AP	02/24/2022	2-001-5-32-391	TOMLIN, JC BLDG MAINT SUPPLY		611.16	
648	COMMERCE BANK-COMMER	COMMERCE BANK-COMMERCIAL CARDS	325989	97066 AP	02/24/2022	2-001-5-33-391	BG CARD-PUMP WIRING,JC FLOOR/M		5,949.10	
648	COMMERCE BANK-COMMER	COMMERCE BANK-COMMERCIAL CARDS	325989	97066 AP	02/24/2022	2-001-5-41-201	APPRAISER COMPUTER/OFC SUPPLY,		28.50	
648	COMMERCE BANK-COMMER	COMMERCE BANK-COMMERCIAL CARDS	325989	97066 AP	02/24/2022	2-001-5-41-271	FLEETHOSTER MARCH SERVICE		138.70	
648	COMMERCE BANK-COMMER	COMMERCE BANK-COMMERCIAL CARDS	325989	97066 AP	02/24/2022	2-001-5-41-301	APPRAISER COMPUTER/OFC SUPPLY,		16.88	
648	COMMERCE BANK-COMMER	COMMERCE BANK-COMMERCIAL CARDS	325989	97066 AP	02/24/2022	2-001-5-41-371	APPRAISER COMPUTER/OFC SUPPLY,		333.98	
648	COMMERCE BANK-COMMER	COMMERCE BANK-COMMERCIAL CARDS	325989	97066 AP	02/24/2022	2-001-5-49-301	MAILROOM,ELECTION,CLERK SUPPLI		217.23	
648	COMMERCE BANK-COMMER	COMMERCE BANK-COMMERCIAL CARDS	325989	97066 AP	02/24/2022	2-001-5-53-220	FLEETHOSTER MARCH SERVICE		118.75	
648	COMMERCE BANK-COMMER	COMMERCE BANK-COMMERCIAL CARDS	325989	97066 AP	02/24/2022	2-001-5-53-301	NOX WEED OFFICE SUPPLIES, SAFE		189.98	
648	COMMERCE BANK-COMMER	COMMERCE BANK-COMMERCIAL CARDS	325989	97066 AP	02/24/2022	2-001-5-53-307	NOX WEED OFFICE SUPPLIES, SAFE		142.98	
648	COMMERCE BANK-COMMER	COMMERCE BANK-COMMERCIAL CARDS	325989	97066 AP	02/24/2022	2-001-5-53-308	BG CARD-PUMP WIRING,JC FLOOR/M		129.00	
							*** VENDOR	648 TOTAL		50,235.68
5362	DIAMOND DRUGS	DIAMOND DRUGS,INC	325918	97015 AP	02/22/2022	2-001-5-07-219	KSLV INMATE PRESCRIPTIONS - JA		804.51	
1219	DIST CT CLERK LV	CLERK OF DIST COURT-LEAV	326035	97108 AP	02/25/2022	2-001-5-11-501	COURT COSTS - LV CO ATTORNEY		4,122.00	
1219	DIST CT CLERK LV	CLERK OF DIST COURT-LEAV	325919	97016 AP	02/22/2022	2-001-5-19-212	ACCOUNTING CLEAN-UP 2003JV250		80.00	
							*** VENDOR	1219 TOTAL		4,202.00
3998	DREXEL TEC	DREXEL TECHNOLOGIES INC	325920	97017 AP	02/22/2022	2-001-5-01-214	28984 SETUP SPECS, KSTATE EXTE		50.00	
516725	ENTERPRISE (ACH)	ENTERPRISE FM TRUST	325901	24	02/20/2022	2-001-5-06-220	FBN439921 FEB VEHICLE LEASE IN		266.28	
516725	ENTERPRISE (ACH)	ENTERPRISE FM TRUST	325901	24	02/20/2022	2-001-5-11-253	FBN439921 FEB VEHICLE LEASE IN		413.25	
516725	ENTERPRISE (ACH)	ENTERPRISE FM TRUST	325901	24	02/20/2022	2-001-5-31-230	FBN439921 FEB VEHICLE LEASE IN		1,424.64	
516725	ENTERPRISE (ACH)	ENTERPRISE FM TRUST	325901	24	02/20/2022	2-001-5-41-271	FBN439921 FEB VEHICLE LEASE IN		1,771.33	
516725	ENTERPRISE (ACH)	ENTERPRISE FM TRUST	325901	24	02/20/2022	2-001-5-53-220	FBN439921 FEB VEHICLE LEASE IN		375.80	
							*** VENDOR	516725 TOTAL		4,251.30
86	EVERGY	EVERGY KANSAS CENTRAL INC	325921	97018 AP	02/22/2022	2-001-5-05-215	ELEC SERVICE EMS ADMIN		969.43	
86	EVERGY	EVERGY KANSAS CENTRAL INC	326036	97109 AP	02/25/2022	2-001-5-53-219	ELEC SVC NOX WEED		278.50	
							*** VENDOR	86 TOTAL		1,247.93

TYPES OF CHECKS SELECTED: * ALL TYPES

		P.O.NUMBER	CHECK#						
8726	FAGAN COMPANY	FAGAN COMPANY	326037	97110 AP	02/25/2022	2-001-5-32-209	24520 JUSTICE CENTER BOILER #2	2,249.72	
2410	FIRST CALL INC	FIRST CALL INC	326039	97112 AP	02/25/2022	2-001-5-13-211	INV 14199 DECEMBER TRANSPORTS	130.00	
2410	FIRST CALL INC	FIRST CALL INC	326039	97112 AP	02/25/2022	2-001-5-13-211	INV 14199 DECEMBER TRANSPORTS	130.00	
2410	FIRST CALL INC	FIRST CALL INC	326039	97112 AP	02/25/2022	2-001-5-13-211	INV 14199 DECEMBER TRANSPORTS	130.00	
2410	FIRST CALL INC	FIRST CALL INC	326039	97112 AP	02/25/2022	2-001-5-13-211	INV 14199 DECEMBER TRANSPORTS	130.00	
2410	FIRST CALL INC	FIRST CALL INC	326039	97112 AP	02/25/2022	2-001-5-13-211	INV 14199 DECEMBER TRANSPORTS	130.00	
2410	FIRST CALL INC	FIRST CALL INC	326039	97112 AP	02/25/2022	2-001-5-13-211	INV 14199 DECEMBER TRANSPORTS	130.00	
2410	FIRST CALL INC	FIRST CALL INC	326039	97112 AP	02/25/2022	2-001-5-13-211	INV 14199 DECEMBER TRANSPORTS	130.00	
2410	FIRST CALL INC	FIRST CALL INC	326039	97112 AP	02/25/2022	2-001-5-13-211	INV 14199 DECEMBER TRANSPORTS	130.00	
2410	FIRST CALL INC	FIRST CALL INC	326039	97112 AP	02/25/2022	2-001-5-13-211	INV 14199 DECEMBER TRANSPORTS	130.00	
2410	FIRST CALL INC	FIRST CALL INC	326039	97112 AP	02/25/2022	2-001-5-13-211	INV 14199 DECEMBER TRANSPORTS	130.00	
2410	FIRST CALL INC	FIRST CALL INC	326039	97112 AP	02/25/2022	2-001-5-13-211	INV 14199 DECEMBER TRANSPORTS	130.00	
2410	FIRST CALL INC	FIRST CALL INC	326039	97112 AP	02/25/2022	2-001-5-13-211	INV 14199 DECEMBER TRANSPORTS	130.00	
2410	FIRST CALL INC	FIRST CALL INC	326039	97112 AP	02/25/2022	2-001-5-13-211	INV 14199 DECEMBER TRANSPORTS	450.00	
*** VENDOR								2410 TOTAL	1,620.00
70	FREESTATE ELECTRIC	FREESTATE ELECTRIC COOPERATIVE	325923	97020 AP	02/22/2022	2-001-5-14-220	ELEC SVC 725 LAMING	853.50	
5824	FRONTIER	FORENSIC MEDICAL HOLDINGS OF K	325924	97021 AP	02/22/2022	2-001-5-11-213	16713845 TESTIMONY 2021-CR-432	1,200.00	
5824	FRONTIER	FORENSIC MEDICAL HOLDINGS OF K	325924	97021 AP	02/22/2022	2-001-5-13-271	INV 19301 JAN AUTOPSIES	1,850.00	
5824	FRONTIER	FORENSIC MEDICAL HOLDINGS OF K	325924	97021 AP	02/22/2022	2-001-5-13-271	INV 19301 JAN AUTOPSIES	1,850.00	
5824	FRONTIER	FORENSIC MEDICAL HOLDINGS OF K	325924	97021 AP	02/22/2022	2-001-5-13-271	INV 19301 JAN AUTOPSIES	1,850.00	
5824	FRONTIER	FORENSIC MEDICAL HOLDINGS OF K	325924	97021 AP	02/22/2022	2-001-5-13-271	INV 19301 JAN AUTOPSIES	1,850.00	
5824	FRONTIER	FORENSIC MEDICAL HOLDINGS OF K	325924	97021 AP	02/22/2022	2-001-5-13-271	INV 19301 JAN AUTOPSIES	1,850.00	
5824	FRONTIER	FORENSIC MEDICAL HOLDINGS OF K	325924	97021 AP	02/22/2022	2-001-5-13-271	INV 19301 JAN AUTOPSIES	1,850.00	
5824	FRONTIER	FORENSIC MEDICAL HOLDINGS OF K	325924	97021 AP	02/22/2022	2-001-5-13-271	INV 19301 JAN AUTOPSIES	1,850.00	
5824	FRONTIER	FORENSIC MEDICAL HOLDINGS OF K	325924	97021 AP	02/22/2022	2-001-5-13-271	INV 19301 JAN AUTOPSIES	1,850.00	
5824	FRONTIER	FORENSIC MEDICAL HOLDINGS OF K	325924	97021 AP	02/22/2022	2-001-5-13-271	INV 19301 JAN AUTOPSIES	1,850.00	
5824	FRONTIER	FORENSIC MEDICAL HOLDINGS OF K	325924	97021 AP	02/22/2022	2-001-5-13-271	INV 19301 JAN AUTOPSIES	1,850.00	
5824	FRONTIER	FORENSIC MEDICAL HOLDINGS OF K	325924	97021 AP	02/22/2022	2-001-5-13-271	INV 19301 JAN AUTOPSIES	1,850.00	
5824	FRONTIER	FORENSIC MEDICAL HOLDINGS OF K	325924	97021 AP	02/22/2022	2-001-5-13-271	INV 19301 JAN AUTOPSIES	1,850.00	
5824	FRONTIER	FORENSIC MEDICAL HOLDINGS OF K	325924	97021 AP	02/22/2022	2-001-5-13-271	INV 19301 JAN AUTOPSIES	1,850.00	
5824	FRONTIER	FORENSIC MEDICAL HOLDINGS OF K	325924	97021 AP	02/22/2022	2-001-5-13-271	INV 19301 JAN AUTOPSIES	1,850.00	
5824	FRONTIER	FORENSIC MEDICAL HOLDINGS OF K	325924	97021 AP	02/22/2022	2-001-5-13-271	INV 19301 JAN AUTOPSIES	25.00	
5824	FRONTIER	FORENSIC MEDICAL HOLDINGS OF K	325924	97021 AP	02/22/2022	2-001-5-13-271	INV 19301 JAN AUTOPSIES	25.00	
5824	FRONTIER	FORENSIC MEDICAL HOLDINGS OF K	325924	97021 AP	02/22/2022	2-001-5-13-271	INV 19301 JAN AUTOPSIES	25.00	
5824	FRONTIER	FORENSIC MEDICAL HOLDINGS OF K	325924	97021 AP	02/22/2022	2-001-5-13-271	INV 19301 JAN AUTOPSIES	25.00	
5824	FRONTIER	FORENSIC MEDICAL HOLDINGS OF K	325924	97021 AP	02/22/2022	2-001-5-13-271	INV 19301 JAN AUTOPSIES	25.00	
5824	FRONTIER	FORENSIC MEDICAL HOLDINGS OF K	325924	97021 AP	02/22/2022	2-001-5-13-271	INV 19301 JAN AUTOPSIES	25.00	
5824	FRONTIER	FORENSIC MEDICAL HOLDINGS OF K	325924	97021 AP	02/22/2022	2-001-5-13-271	INV 19301 JAN AUTOPSIES	25.00	
5824	FRONTIER	FORENSIC MEDICAL HOLDINGS OF K	325924	97021 AP	02/22/2022	2-001-5-13-271	INV 19301 JAN AUTOPSIES	25.00	
5824	FRONTIER	FORENSIC MEDICAL HOLDINGS OF K	325924	97021 AP	02/22/2022	2-001-5-13-271	INV 19301 JAN AUTOPSIES	50.00	
5824	FRONTIER	FORENSIC MEDICAL HOLDINGS OF K	325924	97021 AP	02/22/2022	2-001-5-13-271	INV 19301 JAN AUTOPSIES	50.00	
5824	FRONTIER	FORENSIC MEDICAL HOLDINGS OF K	325924	97021 AP	02/22/2022	2-001-5-13-271	INV 19301 JAN AUTOPSIES	50.00	
5824	FRONTIER	FORENSIC MEDICAL HOLDINGS OF K	325924	97021 AP	02/22/2022	2-001-5-13-271	INV 19301 JAN AUTOPSIES	19.00	
5824	FRONTIER	FORENSIC MEDICAL HOLDINGS OF K	325924	97021 AP	02/22/2022	2-001-5-13-271	INV 19301 JAN AUTOPSIES	19.00	
5824	FRONTIER	FORENSIC MEDICAL HOLDINGS OF K	325924	97021 AP	02/22/2022	2-001-5-13-271	INV 19301 JAN AUTOPSIES	19.00	
5824	FRONTIER	FORENSIC MEDICAL HOLDINGS OF K	325924	97021 AP	02/22/2022	2-001-5-13-271	INV 19301 JAN AUTOPSIES	105.00	
5824	FRONTIER	FORENSIC MEDICAL HOLDINGS OF K	325924	97021 AP	02/22/2022	2-001-5-13-271	INV 19301 JAN AUTOPSIES	45.00	
*** VENDOR								5824 TOTAL	25,732.00
81	FULLER G	GARY L FULLER ATTY	325925	97022 AP	02/22/2022	2-001-5-09-231	COURT APPOINTED ATTORNEY	3,000.00	
971	GALLS	GALLS	325926	97023 AP	02/22/2022	2-001-5-07-350	5289255 UNIFORMS LVSO	112.00	
971	GALLS	GALLS	325926	97023 AP	02/22/2022	2-001-5-07-350	5289255 UNIFORMS LVSO	49.00	
971	GALLS	GALLS	325926	97023 AP	02/22/2022	2-001-5-07-350	5289255 UNIFORMS LVSO	20.00	
971	GALLS	GALLS	325926	97023 AP	02/22/2022	2-001-5-07-350	5289255 UNIFORMS LVSO	49.00	
971	GALLS	GALLS	325926	97023 AP	02/22/2022	2-001-5-07-350	5289255 UNIFORMS LVSO	128.37	
971	GALLS	GALLS	325926	97023 AP	02/22/2022	2-001-5-07-350	5289255 UNIFORMS LVSO	136.00	
971	GALLS	GALLS	325926	97023 AP	02/22/2022	2-001-5-07-350	5289255 UNIFORMS LVSO	110.00	
971	GALLS	GALLS	325926	97023 AP	02/22/2022	2-001-5-07-350	5289255 UNIFORMS LVSO	90.00	
971	GALLS	GALLS	325926	97023 AP	02/22/2022	2-001-5-07-350	5289255 UNIFORMS LVSO	49.00	
*** VENDOR								971 TOTAL	743.37

TYPES OF CHECKS SELECTED: * ALL TYPES

			P.O.NUMBER	CHECK#					
16080	GT DISTRIBUTORS	GT DISTRIBUTORS	326040	97113 AP	02/25/2022	2-001-5-07-356	LVSO GLOCK SUPPRESSOR SIGHTS	62.75	
1941	HALLEY	LAW OFFICE OF E ELAINE HALLEY	325927	97024 AP	02/22/2022	2-001-5-09-231	COURT APPOINTED ATTORNEY	3,000.00	
1025	HONEYWELL	HONEYWELL INTERNATIONAL INC	325931	97028 AP	02/22/2022	2-001-5-31-210	539696 CONTROL CHGS TO 2.28.23	12,998.00	
1025	HONEYWELL	HONEYWELL INTERNATIONAL INC	325931	97028 AP	02/22/2022	2-001-5-32-261	539696 CONTROL CHGS TO 2.28.23	17,441.00	
							*** VENDOR	1025 TOTAL	30,439.00
236	INTERPRETERS	INTERPRETERS INC	325933	97030 AP	02/22/2022	2-001-5-19-221	INTERPRETER 2021CR751 1/24/22	170.31	
7655	J F DENNEY P	J F DENNEY PLUMBING & HEATING	325934	97031 AP	02/22/2022	2-001-5-32-209	LEAV03 JC - SVC CALL - BATHROO	254.09	
99	JUROR								

warrants by vendor

TYPES OF CHECKS SELECTED: * ALL TYPES

P.O.NUMBER CHECK#

99 JUROR

warrants by vendor

TYPES OF CHECKS SELECTED: * ALL TYPES

P.O.NUMBER CHECK#

99 JUROR

warrants by vendor

START DATE: 02/19/2022 END DATE: 02/25/2022

TYPES OF CHECKS SELECTED: * ALL TYPES

		P.O.NUMBER	CHECK#							
99	JUROR									
							*** VENDOR	99 TOTAL	7,139.67	
26400	KANSAS GAS	KANSAS GAS SERVICE	325935	97032 AP	02/22/2022	2-001-5-14-220	510614745 1628631 73 GAS TRANS	1,101.28		
26400	KANSAS GAS	KANSAS GAS SERVICE	325935	97032 AP	02/22/2022	2-001-5-32-392	510614745 1628631 73 GAS TRANS	1,840.72		
26400	KANSAS GAS	KANSAS GAS SERVICE	325935	97032 AP	02/22/2022	2-001-5-33-392	510614745 1562996 18 GAS SERVI	2,146.68		
26400	KANSAS GAS	KANSAS GAS SERVICE	325935	97032 AP	02/22/2022	2-001-5-33-392	510614745 1562996 18 GAS SERVI	166.97		
							*** VENDOR	26400 TOTAL	5,255.65	
1138	KELLER FIRE SAFETY	KELLER FIRE SAFETY	325936	97033 AP	02/22/2022	2-001-5-32-266	LEAVCI JUSTICE CENTER INSPECTI	480.90		
30	KOHL FRANK	FRANK E KOHL	325937	97034 AP	02/22/2022	2-001-5-09-231	COURT APPOINTED ATTORNEY	3,000.00		
9737	KS ROD	KANSAS REGISTER OF DEEDS ASSN	326109	97182 AP	02/25/2022	2-001-5-04-202	JUNE ROD SCHOOL - TERRILOIS MA	65.00		
168	LCHS	LEAVENWORTH CO HUMANE SOCIETY	325938	97035 AP	02/22/2022	2-001-5-07-266	JANUARY 2022 PER CONTRACT	1,312.50		
17244	MARLOW WHI	MARLOW WHITE UNIFORM CO	326111	97184 AP	02/25/2022	2-001-5-07-350	LVSO UNIFORMS	481.00		
28640	MID-CONTIN	MID-CONTINENT MICROGRAPHICS	326112	97185 AP	02/25/2022	2-001-5-04-212	CUST C2258 REPAIR ROLL FOR BOO	27.24		
2059	MIDWEST OFFICE TECH	MIDWEST OFFICE TECHNOLOGY INC	326113	97186 AP	02/25/2022	2-001-5-01-201	OPK595_K COPIER USAGE - BOCC	263.33		
2666	MISC REIMBURSEMENTS	TERRILOIS MASHBURN	326114	97187 AP	02/25/2022	2-001-5-04-205	REIM MILEAGE - ROD MEETINGS 1/	32.76		
1962	MOTOROLA	MOTOROLA SOLUTIONS CREDIT COMP	326116	97189 AP	02/25/2022	2-001-5-07-264	CONTRACT 678-0024799-000 LVSO	173,586.16		
3	OTHER COUNTY OFFICE	LARIMER CO SHERIFF DEPARTMENT	325947	97044 AP	02/22/2022	2-001-5-11-213	REQUEST FOR SERVICE - CRIM CAS	9.50		
7926	PAWNEE	CLERK OF DISTRICT COURT - PAWN	326117	97190 AP	02/25/2022	2-001-5-19-222	STATEMENT OF COSTS LV15CT013	260.00		
7926	PAWNEE	CLERK OF DISTRICT COURT - PAWN	326117	97190 AP	02/25/2022	2-001-5-19-222	ATTY FEES LV2021-CR-082	190.00		
							*** VENDOR	7926 TOTAL	450.00	
7098	QUILL CORP	QUILL CORP	326118	97191 AP	02/25/2022	2-001-5-01-301	6310540 BOCC SUPPLIES	77.65		
7098	QUILL CORP	QUILL CORP	326118	97191 AP	02/25/2022	2-001-5-01-301	6310540 BOCC SUPPLIES	68.99		
7098	QUILL CORP	QUILL CORP	326118	97191 AP	02/25/2022	2-001-5-01-301	6310540 BOCC SUPPLIES	68.99-		
7098	QUILL CORP	QUILL CORP	325948	97045 AP	02/22/2022	2-001-5-07-301	8333027 LVSO OFFICE SUPPLIES	158.87		
7098	QUILL CORP	QUILL CORP	325948	97045 AP	02/22/2022	2-001-5-07-301	8333027 LVSO OFFICE SUPPLIES	160.21		
							*** VENDOR	7098 TOTAL	396.73	
103	RESTITUTIO									
							*** VENDOR	103 TOTAL	566.55	
1888	RIOUX,BENJAMIN JAMES	BENJAMIN JAMES RIOUX	325951	97048 AP	02/22/2022	2-001-5-09-231	COURT APPOINTED ATTORNEY	3,000.00		
22331	ROTH JOSEP	JOSEPH ROTH	326123	97196 AP	02/25/2022	2-001-5-41-270	2022 COMMERCIAL APPRAISALS	28,800.00		

warrants by vendor

START DATE: 02/19/2022 END DATE: 02/25/2022

TYPES OF CHECKS SELECTED: * ALL TYPES

		P.O.NUMBER	CHECK#							
22331	ROTH JOSEP	JOSEPH ROTH	326123	97196 AP	02/25/2022	2-001-5-41-270	2022 COMMERCIAL APPRAISALS	11,911.00-		
								*** VENDOR	22331 TOTAL	16,889.00
6148	SHERIFF	LEAV CO SHERIFF DEPT	326124	97197 AP	02/25/2022	2-001-5-07-211	REIM MEALS, VEH REGISTRATION	148.05		
6148	SHERIFF	LEAV CO SHERIFF DEPT	326124	97197 AP	02/25/2022	2-001-5-07-211	REIM MEALS, VEH REGISTRATION	150.10		
6148	SHERIFF	LEAV CO SHERIFF DEPT	326124	97197 AP	02/25/2022	2-001-5-07-213	REIM MEALS, VEH REGISTRATION	37.75		
								*** VENDOR	6148 TOTAL	335.90
316	SMART	PACIFIC SATELLITE SYSTEMS INC	325953	97050 AP	02/22/2022	2-001-5-07-208	ANNUAL MAINT FEE	348.00		
915	SMITHEREEN PEST MANA	SMITHEREEN PEST MANAGEMENT	325954	97051 AP	02/22/2022	2-001-5-31-212	204513 PEST CONTROL FEBRUARY	533.00		
915	SMITHEREEN PEST MANA	SMITHEREEN PEST MANAGEMENT	325954	97051 AP	02/22/2022	2-001-5-32-211	204513 PEST CONTROL FEBRUARY	75.00		
								*** VENDOR	915 TOTAL	608.00
306	STREET COP	NJ CRIMINAL INTERDICTION LLC	326125	97198 AP	02/25/2022	2-001-5-07-202	LV SHERIFF TRAINING	498.00		
248	SUMMIT FOOD	ELIOR, INC	326126	97199 AP	02/25/2022	2-001-5-07-216	INMATE MEALS	5,733.62		
248	SUMMIT FOOD	ELIOR, INC	326126	97199 AP	02/25/2022	2-001-5-07-216	INMATE MEALS	5,559.57		
248	SUMMIT FOOD	ELIOR, INC	326126	97199 AP	02/25/2022	2-001-5-07-216	INMATE MEALS	5,507.79		
248	SUMMIT FOOD	ELIOR, INC	326126	97199 AP	02/25/2022	2-001-5-07-216	INMATE MEALS	5,638.32		
								*** VENDOR	248 TOTAL	22,439.30
376	SYMMETRY	ATHENS ENERGY SERVICES HOLDING	326127	97200 AP	02/25/2022	2-001-5-33-392	413714 711 MARSHALL GAS SERVIC	8,136.93		
22602	THOMPSON TODD	MR TODD THOMPSON	326128	97201 AP	02/25/2022	2-001-5-11-240	APPEAL 2013-CR-454	600.00		
41	UNDERGROUN	UNDERGROUND VAULTS & STORAGE	325959	97056 AP	02/22/2022	2-001-5-19-214	1000492 LEASE RENTAL -PALLETS	229.00		
2144	VAN TUYL JOELLEN	JOELLEN M VAN TUYL	325960	97057 AP	02/22/2022	2-001-5-11-255	COUNTY ATTORNEY TRANSCRIPTS	367.50		
2144	VAN TUYL JOELLEN	JOELLEN M VAN TUYL	325960	97057 AP	02/22/2022	2-001-5-19-251	DIST CT TRANSCRIPTS	601.00		
								*** VENDOR	2144 TOTAL	968.50
2	WATER DEPT	WATER DEPT	326129	97202 AP	02/25/2022	2-001-5-05-215	WATER SVC EMS 9103	50.73		
2007	WIRENUTS	WIRENUTS	326130	97203 AP	02/25/2022	2-001-5-07-301	SHF FOBS	50.00		
100	WITNESS LIST									
								*** VENDOR	100 TOTAL	323.71
								TOTAL FUND 001		406,045.69

648	COMMERCE BANK-COMMER	COMMERCE BANK-COMMERCIAL CARDS	325989	97066 AP	02/24/2022	2-108-5-00-211	HEALTH DEPT:MED/OFC SUPPLY,VEH	10.20		
648	COMMERCE BANK-COMMER	COMMERCE BANK-COMMERCIAL CARDS	325989	97066 AP	02/24/2022	2-108-5-00-213	HEALTH DEPT:MED/OFC SUPPLY,VEH	31.98		
648	COMMERCE BANK-COMMER	COMMERCE BANK-COMMERCIAL CARDS	325989	97066 AP	02/24/2022	2-108-5-00-219	AT&T HEALTH DEPT (CCL GRANT)	164.72		
648	COMMERCE BANK-COMMER	COMMERCE BANK-COMMERCIAL CARDS	325989	97066 AP	02/24/2022	2-108-5-00-219	HEALTH DEPT:MED/OFC SUPPLY,VEH	431.96		
648	COMMERCE BANK-COMMER	COMMERCE BANK-COMMERCIAL CARDS	325989	97066 AP	02/24/2022	2-108-5-00-280	HEALTH DEPT:MED/OFC SUPPLY,VEH	1,461.81		
648	COMMERCE BANK-COMMER	COMMERCE BANK-COMMERCIAL CARDS	325989	97066 AP	02/24/2022	2-108-5-00-301	HEALTH DEPT:MED/OFC SUPPLY,VEH	1,444.28		
648	COMMERCE BANK-COMMER	COMMERCE BANK-COMMERCIAL CARDS	325989	97066 AP	02/24/2022	2-108-5-00-380	HEALTH DEPT:MED/OFC SUPPLY,VEH	1,526.39		
648	COMMERCE BANK-COMMER	COMMERCE BANK-COMMERCIAL CARDS	325989	97066 AP	02/24/2022	2-108-5-00-384	HEALTH DEPT:MED/OFC SUPPLY,VEH	1,910.55		
648	COMMERCE BANK-COMMER	COMMERCE BANK-COMMERCIAL CARDS	325989	97066 AP	02/24/2022	2-108-5-00-601	2-14 MIDWEST MOBILE RADIO 211-	75.00		
648	COMMERCE BANK-COMMER	COMMERCE BANK-COMMERCIAL CARDS	325989	97066 AP	02/24/2022	2-108-5-00-601	HEALTH DEPT:MED/OFC SUPPLY,VEH	243.00		
648	COMMERCE BANK-COMMER	COMMERCE BANK-COMMERCIAL CARDS	325989	97066 AP	02/24/2022	2-108-5-00-606	WIC (SCALE INSPECTIONS)	315.00		
648	COMMERCE BANK-COMMER	COMMERCE BANK-COMMERCIAL CARDS	325989	97066 AP	02/24/2022	2-108-5-00-606	HEALTH DEPT:MED/OFC SUPPLY,VEH	426.45		
648	COMMERCE BANK-COMMER	COMMERCE BANK-COMMERCIAL CARDS	325989	97066 AP	02/24/2022	2-108-5-00-610	HEALTH DEPT:MED/OFC SUPPLY,VEH	312.27		
								*** VENDOR	648 TOTAL	8,353.61

warrants by vendor

START DATE: 02/19/2022 END DATE: 02/25/2022

TYPES OF CHECKS SELECTED: * ALL TYPES

				P.O.NUMBER	CHECK#						
86	EVERGY	EVERGY KANSAS CENTRAL INC	325921	97018 AP	02/22/2022	2-108-5-00-219	ELEC SVC WIC/HEALTH		727.08		
86	EVERGY	EVERGY KANSAS CENTRAL INC	325921	97018 AP	02/22/2022	2-108-5-00-606	ELEC SVC WIC/HEALTH		242.35		
									*** VENDOR	86 TOTAL	969.43
2059	MIDWEST OFFICE TECH	MIDWEST OFFICE TECHNOLOGY INC	326113	97186 AP	02/25/2022	2-108-5-00-301	OPK598_K PRINTER		37.60		
									TOTAL FUND 108		9,360.64

24545	CDW GOVERN	CDW GOVERNMENT INC	325915	97012 AP	02/22/2022	2-115-5-00-409	3773122 DISPLAYS (IS)		296.46		
648	COMMERCE BANK-COMMER	COMMERCE BANK-COMMERCIAL CARDS	325989	97066 AP	02/24/2022	2-115-5-00-408	LVSO:BED COVER FOR 2022 CHEVY		1,970.00		
									TOTAL FUND 115	2,266.46	

648	COMMERCE BANK-COMMER	COMMERCE BANK-COMMERCIAL CARDS	325989	97066 AP	02/24/2022	2-118-5-00-405	JVP:SATELLITE FOR ANNEX CUSTOM		96.98		
									TOTAL FUND 118	96.98	

843	FIDLAR	FIDLAR	326038	97111 AP	02/25/2022	2-119-5-00-402	2010343 IMPORTAGE BK 507-536,5		1,950.00		
									TOTAL FUND 119	1,950.00	

537	LEAV TIMES	LEAVENWORTH TIMES	326110	97183 AP	02/25/2022	2-123-5-00-301	ACCT 185 JOB ADS		114.00		
									TOTAL FUND 123	114.00	

648	COMMERCE BANK-COMMER	COMMERCE BANK-COMMERCIAL CARDS	325989	97066 AP	02/24/2022	2-126-5-00-210	COMM CORR WIRELESS,OFFICE SUPP		40.01		
648	COMMERCE BANK-COMMER	COMMERCE BANK-COMMERCIAL CARDS	325989	97066 AP	02/24/2022	2-126-5-00-221	FLEETHOSTER MARCH SERVICE		9.97		
648	COMMERCE BANK-COMMER	COMMERCE BANK-COMMERCIAL CARDS	325989	97066 AP	02/24/2022	2-126-5-00-225	IRON MOUNTAIN SHREDDING (426.5		11.50		
648	COMMERCE BANK-COMMER	COMMERCE BANK-COMMERCIAL CARDS	325989	97066 AP	02/24/2022	2-126-5-00-225	IRON MOUNTAIN SHREDDING (426.5		11.50		
648	COMMERCE BANK-COMMER	COMMERCE BANK-COMMERCIAL CARDS	325989	97066 AP	02/24/2022	2-126-5-00-321	COMM CORR WIRELESS,OFFICE SUPP		13.87		
									*** VENDOR	648 TOTAL	86.85
516725	ENTERPRISE (ACH)	ENTERPRISE FM TRUST	325901	24	02/20/2022	2-126-5-00-221	FBN439921 FEB VEHICLE LEASE IN		14.77		
7098	QUILL CORP	QUILL CORP	325948	97045 AP	02/22/2022	2-126-5-00-301	C5645204 COMM CORR OFFICE SUP		313.79		
113	SUMNERONE INC	SUMNERONE INC	325955	97052 AP	02/22/2022	2-126-5-00-225	50COL COPIES COMMUNITY CORRECT		32.04		
									TOTAL FUND 126	447.45	

648	COMMERCE BANK-COMMER	COMMERCE BANK-COMMERCIAL CARDS	325989	97066 AP	02/24/2022	2-127-5-00-3	KTA,ZOOM,TRAINING,COMMODITIES		149.80		
648	COMMERCE BANK-COMMER	COMMERCE BANK-COMMERCIAL CARDS	325989	97066 AP	02/24/2022	2-127-5-00-3	COMM CORR JCAB,COMMODITIES		98.62		
									*** VENDOR	648 TOTAL	248.42
7098	QUILL CORP	QUILL CORP	325948	97045 AP	02/22/2022	2-127-5-00-3	C5645204 COMM CORR OFFICE SUP		24.63		
7098	QUILL CORP	QUILL CORP	325948	97045 AP	02/22/2022	2-127-5-00-3	C5645204 COMM CORR OFFICE SUP		5.90		
7098	QUILL CORP	QUILL CORP	325948	97045 AP	02/22/2022	2-127-5-00-3	C5645204 COMM CORR OFFICE SUP		131.99		
									*** VENDOR	7098 TOTAL	162.52
									TOTAL FUND 127	410.94	

27101	CENTRAL PO	CENTRAL POWER SYSTEMS & SERVIC	325916	97013 AP	02/22/2022	2-133-5-00-360	2-24 17159 HOSE CONNEX,ORINGS,		65.49		
5637	CLEARWATER ENTERPRIS	CLEARWATER ENTERPRISES,LLC	325917	97014 AP	02/22/2022	2-133-5-00-304	2-34 20642-5600012201 GAS SERV		720.39		
648	COMMERCE BANK-COMMER	COMMERCE BANK-COMMERCIAL CARDS	325989	97066 AP	02/24/2022	2-133-5-00-201	2-37 PW TOOLS,WELD/OFC/SAFETY		1,350.00		
648	COMMERCE BANK-COMMER	COMMERCE BANK-COMMERCIAL CARDS	325989	97066 AP	02/24/2022	2-133-5-00-207	2-14 MIDWEST MOBILE RADIO 211-		395.00		
648	COMMERCE BANK-COMMER	COMMERCE BANK-COMMERCIAL CARDS	325989	97066 AP	02/24/2022	2-133-5-00-210	2-1 AT&T MOBILITY - DATA CONNE		329.67		
648	COMMERCE BANK-COMMER	COMMERCE BANK-COMMERCIAL CARDS	325989	97066 AP	02/24/2022	2-133-5-00-214	2-38 PW,EVANS,AREVALO,WILLIAMS		392.58		
648	COMMERCE BANK-COMMER	COMMERCE BANK-COMMERCIAL CARDS	325989	97066 AP	02/24/2022	2-133-5-00-214	2-37 PW TOOLS,WELD/OFC/SAFETY		465.82		
648	COMMERCE BANK-COMMER	COMMERCE BANK-COMMERCIAL CARDS	325989	97066 AP	02/24/2022	2-133-5-00-301	2-38 PW,EVANS,AREVALO,WILLIAMS		158.61		
648	COMMERCE BANK-COMMER	COMMERCE BANK-COMMERCIAL CARDS	325989	97066 AP	02/24/2022	2-133-5-00-301	2-37 PW TOOLS,WELD/OFC/SAFETY		337.99		
648	COMMERCE BANK-COMMER	COMMERCE BANK-COMMERCIAL CARDS	325989	97066 AP	02/24/2022	2-133-5-00-301	2-37 PW TOOLS,WELD/OFC/SAFETY		35.05		
648	COMMERCE BANK-COMMER	COMMERCE BANK-COMMERCIAL CARDS	325989	97066 AP	02/24/2022	2-133-5-00-309	2-38 PW,EVANS,AREVALO,WILLIAMS		2,097.44		
648	COMMERCE BANK-COMMER	COMMERCE BANK-COMMERCIAL CARDS	325989	97066 AP	02/24/2022	2-133-5-00-311	2-38 PW,EVANS,AREVALO,WILLIAMS		41.54		
648	COMMERCE BANK-COMMER	COMMERCE BANK-COMMERCIAL CARDS	325989	97066 AP	02/24/2022	2-133-5-00-311	2-38 PW,EVANS,AREVALO,WILLIAMS		170.19		

TYPES OF CHECKS SELECTED: * ALL TYPES

			P.O.NUMBER	CHECK#							
648	COMMERCE BANK-COMMER	COMMERCE BANK-COMMERCIAL CARDS	325989	97066 AP	02/24/2022	2-133-5-00-311	2-37	PW TOOLS,WELD/OFC/SAFETY		388.84	
648	COMMERCE BANK-COMMER	COMMERCE BANK-COMMERCIAL CARDS	325989	97066 AP	02/24/2022	2-133-5-00-312	2-38	PW,EVANS,AREVALO,WILLIAMS		138.19	
648	COMMERCE BANK-COMMER	COMMERCE BANK-COMMERCIAL CARDS	325989	97066 AP	02/24/2022	2-133-5-00-312	2-37	PW TOOLS,WELD/OFC/SAFETY		7.26	
648	COMMERCE BANK-COMMER	COMMERCE BANK-COMMERCIAL CARDS	325989	97066 AP	02/24/2022	2-133-5-00-360	2-38	PW,EVANS,AREVALO,WILLIAMS		1,189.15	
648	COMMERCE BANK-COMMER	COMMERCE BANK-COMMERCIAL CARDS	325989	97066 AP	02/24/2022	2-133-5-00-360	2-38	PW,EVANS,AREVALO,WILLIAMS		363.71	
648	COMMERCE BANK-COMMER	COMMERCE BANK-COMMERCIAL CARDS	325989	97066 AP	02/24/2022	2-133-5-00-360	2-38	PW,EVANS,AREVALO,WILLIAMS		1,690.94	
648	COMMERCE BANK-COMMER	COMMERCE BANK-COMMERCIAL CARDS	325989	97066 AP	02/24/2022	2-133-5-00-363	2-37	PW TOOLS,WELD/OFC/SAFETY		182.30	
648	COMMERCE BANK-COMMER	COMMERCE BANK-COMMERCIAL CARDS	325989	97066 AP	02/24/2022	2-133-5-00-364	2-37	PW TOOLS,WELD/OFC/SAFETY		86.97	
648	COMMERCE BANK-COMMER	COMMERCE BANK-COMMERCIAL CARDS	325989	97066 AP	02/24/2022	2-133-5-00-364	2-37	PW TOOLS,WELD/OFC/SAFETY		157.57	
648	COMMERCE BANK-COMMER	COMMERCE BANK-COMMERCIAL CARDS	325989	97066 AP	02/24/2022	2-133-5-00-365	2-37	PW TOOLS,WELD/OFC/SAFETY		1,465.72	
648	COMMERCE BANK-COMMER	COMMERCE BANK-COMMERCIAL CARDS	325989	97066 AP	02/24/2022	2-133-5-00-365	2-37	PW TOOLS,WELD/OFC/SAFETY		639.69	
								*** VENDOR	648 TOTAL		12,084.23
86	EVERGY	EVERGY KANSAS CENTRAL INC	326036	97109 AP	02/25/2022	2-133-5-00-251	2-36	ELEC SVC CO SHOP ET AL		1,030.92	
86	EVERGY	EVERGY KANSAS CENTRAL INC	326036	97109 AP	02/25/2022	2-133-5-00-251	2-36	ELEC SVC CO SHOP ET AL		691.18	
86	EVERGY	EVERGY KANSAS CENTRAL INC	326036	97109 AP	02/25/2022	2-133-5-00-251	2-36	ELEC SVC CO SHOP ET AL		21.20	
86	EVERGY	EVERGY KANSAS CENTRAL INC	326036	97109 AP	02/25/2022	2-133-5-00-251	2-36	ELEC SVC CO SHOP ET AL		341.47	
								*** VENDOR	86 TOTAL		2,084.77
70	FREESTATE ELECTRIC	FREESTATE ELECTRIC COOPERATIVE	325923	97020 AP	02/22/2022	2-133-5-00-251	2-23	ELEC SVC TONGIE QUARRY		54.38	
434	HAMM QUARR	HAMM QUARRIES	325928	97025 AP	02/22/2022	2-133-5-00-361	2-25	300467 ROCK		370.82	
434	HAMM QUARR	HAMM QUARRIES	325928	97025 AP	02/22/2022	2-133-5-00-361	2-25	300467 ROCK		740.20	
434	HAMM QUARR	HAMM QUARRIES	325928	97025 AP	02/22/2022	2-133-5-00-361	2-25	300467 ROCK		178.51	
434	HAMM QUARR	HAMM QUARRIES	325928	97025 AP	02/22/2022	2-133-5-00-361	2-25	300467 ROCK		378.03	
								*** VENDOR	434 TOTAL		1,667.56
368	INDEPENDEN	INDEPENDENT SALT CO	325932	97029 AP	02/22/2022	2-133-5-00-306	2-26	2KSLEAV ICE CONTROL SALT		9,105.91	
368	INDEPENDEN	INDEPENDENT SALT CO	325932	97029 AP	02/22/2022	2-133-5-00-306	2-26	2KSLEAV ICE CONTROL SALT		9,362.56	
368	INDEPENDEN	INDEPENDENT SALT CO	325932	97029 AP	02/22/2022	2-133-5-00-306	2-26	2KSLEAV ICE CONTROL SALT		15,932.09	
								*** VENDOR	368 TOTAL		34,400.56
232	MHC KENWORTH	MHC KENWORTH-OLATHE	325943	97040 AP	02/22/2022	2-133-5-00-360	2-27	95988 PARTS		875.06-	
232	MHC KENWORTH	MHC KENWORTH-OLATHE	325943	97040 AP	02/22/2022	2-133-5-00-360	2-27	95988 PARTS		47.52	
232	MHC KENWORTH	MHC KENWORTH-OLATHE	325943	97040 AP	02/22/2022	2-133-5-00-360	2-27	95988 PARTS		199.76	
232	MHC KENWORTH	MHC KENWORTH-OLATHE	325943	97040 AP	02/22/2022	2-133-5-00-360	2-27	95988 PARTS		299.46	
232	MHC KENWORTH	MHC KENWORTH-OLATHE	325943	97040 AP	02/22/2022	2-133-5-00-360	2-27	95988 PARTS		15.47	
232	MHC KENWORTH	MHC KENWORTH-OLATHE	325943	97040 AP	02/22/2022	2-133-5-00-360	2-27	95988 PARTS		392.88	
232	MHC KENWORTH	MHC KENWORTH-OLATHE	325943	97040 AP	02/22/2022	2-133-5-00-360	2-27	95988 PARTS		5.97	
232	MHC KENWORTH	MHC KENWORTH-OLATHE	325943	97040 AP	02/22/2022	2-133-5-00-360	2-27	95988 PARTS		88.96	
								*** VENDOR	232 TOTAL		174.96
2666	MISC REIMBURSEMENTS	SCHWINN ELECTRIC, INC	325944	97041 AP	02/22/2022	2-133-5-00-207	2-29	REPAIR DAMAGE BY ROCK TRU		185.00	
2666	MISC REIMBURSEMENTS	JOHN GLAVES	326115	97188 AP	02/25/2022	2-133-5-00-363	2-35	REIMBURSEMENT FOR MAILBOX		180.00	
								*** VENDOR	2666 TOTAL		365.00
1242	SCOTWOOD I	SCOTWOOD INDUSTRIES INC	325952	97049 AP	02/22/2022	2-133-5-00-306	2-28	LEAV02 CALCIUM CHLORIDE		5,639.76	
10703	TIRE TOWN	TIRE TOWN	325956	97053 AP	02/22/2022	2-133-5-00-309	2-30	ROLLOFF SCRAP TIRES		500.00	
22972	TRANSFER STATION	TRANSFER STATION	325957	97054 AP	02/22/2022	2-133-5-00-214	2-31	ACCT 656 CONSTRUCTION		204.00	
22972	TRANSFER STATION	TRANSFER STATION	325957	97054 AP	02/22/2022	2-133-5-00-214	2-31	ACCT 656 CONSTRUCTION		60.00	
								*** VENDOR	22972 TOTAL		264.00
392	VANDERBILT	VANDERBILT'S	325961	97058 AP	02/22/2022	2-133-5-00-364	2-32	1000127 SAFETY BOOTS		144.99	
392	VANDERBILT	VANDERBILT'S	325961	97058 AP	02/22/2022	2-133-5-00-364	2-32	1000127 SAFETY BOOTS		129.99	
								*** VENDOR	392 TOTAL		274.98
1768	VITAL RECORDS	VITAL RECORDS HOLDING, LLC	325962	97059 AP	02/22/2022	2-133-5-00-301	2-33	10156330 ANNUAL STORAGE P		886.67	
								TOTAL FUND 133			59,182.75

648	COMMERCE BANK-COMMER	COMMERCE BANK-COMMERCIAL CARDS	325989	97066 AP	02/24/2022	2-136-5-00-203		IRON MOUNTAIN SHREDDING (426.5		5.75	
648	COMMERCE BANK-COMMER	COMMERCE BANK-COMMERCIAL CARDS	325989	97066 AP	02/24/2022	2-136-5-00-203		IRON MOUNTAIN SHREDDING (426.5		5.75	

TYPES OF CHECKS SELECTED: * ALL TYPES

			P.O.NUMBER	CHECK#						
648	COMMERCE BANK-COMMER	COMMERCE BANK-COMMERCIAL CARDS	325989	97066 AP	02/24/2022	2-136-5-00-206	COMM CORR WIRELESS,OFFICE SUPP		40.01	
648	COMMERCE BANK-COMMER	COMMERCE BANK-COMMERCIAL CARDS	325989	97066 AP	02/24/2022	2-136-5-00-221	FLEETHOSTER MARCH SERVICE		9.98	
648	COMMERCE BANK-COMMER	COMMERCE BANK-COMMERCIAL CARDS	325989	97066 AP	02/24/2022	2-136-5-00-221	KTA,ZOOM,TRAINING,COMMODITIES		10.20	
648	COMMERCE BANK-COMMER	COMMERCE BANK-COMMERCIAL CARDS	325989	97066 AP	02/24/2022	2-136-5-00-223	IRON MOUNTAIN SHREDDING (426.5		5.75	
648	COMMERCE BANK-COMMER	COMMERCE BANK-COMMERCIAL CARDS	325989	97066 AP	02/24/2022	2-136-5-00-223	IRON MOUNTAIN SHREDDING (426.5		5.75	
648	COMMERCE BANK-COMMER	COMMERCE BANK-COMMERCIAL CARDS	325989	97066 AP	02/24/2022	2-136-5-00-237	COMM CORR JCAB,COMMODITIES		26.61	
648	COMMERCE BANK-COMMER	COMMERCE BANK-COMMERCIAL CARDS	325989	97066 AP	02/24/2022	2-136-5-00-3	KTA,ZOOM,TRAINING,COMMODITIES		339.80	
648	COMMERCE BANK-COMMER	COMMERCE BANK-COMMERCIAL CARDS	325989	97066 AP	02/24/2022	2-136-5-00-3	COMM CORR JCAB,COMMODITIES		98.63	
648	COMMERCE BANK-COMMER	COMMERCE BANK-COMMERCIAL CARDS	325989	97066 AP	02/24/2022	2-136-5-00-301	COMM CORR WIRELESS,OFFICE SUPP		13.88	
							*** VENDOR	648 TOTAL		562.11
516725	ENTERPRISE (ACH)	ENTERPRISE FM TRUST	325901	24	02/20/2022	2-136-5-00-221	FBN439921 FEB VEHICLE LEASE IN		14.77	
7098	QUILL CORP	QUILL CORP	325948	97045 AP	02/22/2022	2-136-5-00-238	C5645204 COMM CORR OFFICE SUP		82.99	
7098	QUILL CORP	QUILL CORP	325948	97045 AP	02/22/2022	2-136-5-00-3	C5645204 COMM CORR OFFICE SUP		83.00	
7098	QUILL CORP	QUILL CORP	325948	97045 AP	02/22/2022	2-136-5-00-3	C5645204 COMM CORR OFFICE SUP		24.64	
7098	QUILL CORP	QUILL CORP	325948	97045 AP	02/22/2022	2-136-5-00-3	C5645204 COMM CORR OFFICE SUP		5.89	
7098	QUILL CORP	QUILL CORP	325948	97045 AP	02/22/2022	2-136-5-00-3	C5645204 COMM CORR OFFICE SUP		132.00	
7098	QUILL CORP	QUILL CORP	325948	97045 AP	02/22/2022	2-136-5-00-301	C5645204 COMM CORR OFFICE SUP		128.97	
7098	QUILL CORP	QUILL CORP	325948	97045 AP	02/22/2022	2-136-5-00-321	C5645204 COMM CORR OFFICE SUP		128.96	
							*** VENDOR	7098 TOTAL		586.45
113	SUMNERONE INC	SUMNERONE INC	325955	97052 AP	02/22/2022	2-136-5-00-203	50COL COPIES COMMUNITY CORRECT		16.02	
113	SUMNERONE INC	SUMNERONE INC	325955	97052 AP	02/22/2022	2-136-5-00-203	50ULC08 COPIER MAINT COMMUNI		1.17	
113	SUMNERONE INC	SUMNERONE INC	325955	97052 AP	02/22/2022	2-136-5-00-223	50COL COPIES COMMUNITY CORRECT		16.02	
113	SUMNERONE INC	SUMNERONE INC	325955	97052 AP	02/22/2022	2-136-5-00-223	50ULC08 COPIER MAINT COMMUNI		1.17	
							*** VENDOR	113 TOTAL		34.38
							TOTAL FUND 136			1,197.71
2588	FOLEY EQUIPMENT	FOLEY EQUIPMENT	325922	97019 AP	02/22/2022	2-137-5-00-320	2-8 016993 ELEMENT ASSEMBLIES		36.88	
2588	FOLEY EQUIPMENT	FOLEY EQUIPMENT	325922	97019 AP	02/22/2022	2-137-5-00-320	2-8 016993 ELEMENT ASSEMBLIES		73.76	
							*** VENDOR	2588 TOTAL		110.64
434	HAMM QUARR	HAMM QUARRIES	325928	97025 AP	02/22/2022	2-137-5-00-312	2-9 300467 ROCK, BEDDING		230.06	
434	HAMM QUARR	HAMM QUARRIES	325928	97025 AP	02/22/2022	2-137-5-00-312	2-9 300467 ROCK, BEDDING		5,825.74	
434	HAMM QUARR	HAMM QUARRIES	325928	97025 AP	02/22/2022	2-137-5-00-312	2-9 300467 ROCK, BEDDING		3,878.24	
434	HAMM QUARR	HAMM QUARRIES	325928	97025 AP	02/22/2022	2-137-5-00-312	2-9 300467 ROCK, BEDDING		1,928.30	
434	HAMM QUARR	HAMM QUARRIES	325928	97025 AP	02/22/2022	2-137-5-00-312	2-9 300467 ROCK, BEDDING		928.38	
							*** VENDOR	434 TOTAL		12,790.72
27474	HEAVYQUIP	HEAVYQUIP	325929	97026 AP	02/22/2022	2-137-5-00-320	2-10 08473-C GRADER BLADES		2,820.00	
369	HOLLIDAY	HOLLIDAY SAND & GRAVEL CO	325930	97027 AP	02/22/2022	2-137-5-00-312	2-11 218313 ROCK		1,898.51	
369	HOLLIDAY	HOLLIDAY SAND & GRAVEL CO	325930	97027 AP	02/22/2022	2-137-5-00-312	2-11 218313 ROCK		741.79	
369	HOLLIDAY	HOLLIDAY SAND & GRAVEL CO	325930	97027 AP	02/22/2022	2-137-5-00-312	2-11 218313 ROCK		153.96	
369	HOLLIDAY	HOLLIDAY SAND & GRAVEL CO	325930	97027 AP	02/22/2022	2-137-5-00-312	2-11 218313 ROCK		1,441.71	
369	HOLLIDAY	HOLLIDAY SAND & GRAVEL CO	325930	97027 AP	02/22/2022	2-137-5-00-312	2-11 218313 ROCK		158.88	
369	HOLLIDAY	HOLLIDAY SAND & GRAVEL CO	325930	97027 AP	02/22/2022	2-137-5-00-312	2-11 218313 ROCK		149.65	
369	HOLLIDAY	HOLLIDAY SAND & GRAVEL CO	325930	97027 AP	02/22/2022	2-137-5-00-312	2-11 218313 ROCK		595.74	
							*** VENDOR	369 TOTAL		5,140.24
							TOTAL FUND 137			20,861.60
648	COMMERCE BANK-COMMER	COMMERCE BANK-COMMERCIAL CARDS	325989	97066 AP	02/24/2022	2-144-5-00-2	COA/PALS,TNG,GRANT CONSUMABLES		531.61	
648	COMMERCE BANK-COMMER	COMMERCE BANK-COMMERCIAL CARDS	325989	97066 AP	02/24/2022	2-144-5-00-2	COA/PALS,TNG,GRANT CONSUMABLES		174.52	
648	COMMERCE BANK-COMMER	COMMERCE BANK-COMMERCIAL CARDS	325989	97066 AP	02/24/2022	2-144-5-00-2	COA/PALS,TNG,GRANT CONSUMABLES		225.00	
648	COMMERCE BANK-COMMER	COMMERCE BANK-COMMERCIAL CARDS	325989	97066 AP	02/24/2022	2-144-5-00-3	COA/PALS,TNG,GRANT CONSUMABLES		129.20	
648	COMMERCE BANK-COMMER	COMMERCE BANK-COMMERCIAL CARDS	325989	97066 AP	02/24/2022	2-144-5-00-3	COA/PALS,TNG,GRANT CONSUMABLES		386.11	
648	COMMERCE BANK-COMMER	COMMERCE BANK-COMMERCIAL CARDS	325989	97066 AP	02/24/2022	2-144-5-00-3	COA/PALS,TNG,GRANT CONSUMABLES		953.25	

TYPES OF CHECKS SELECTED: * ALL TYPES

		P.O.NUMBER	CHECK#							
								*** VENDOR	648 TOTAL	2,399.69
								TOTAL FUND 144		2,399.69
20588	ADVANTAGE	ADVANTAGE PRINTING	326030	97103 AP	02/25/2022	2-145-5-00-303	CO ON AGING ACCT 104: STATIONE	233.50		
2621	BOOKER TERRY	TERRY BOOKER	325910	97007 AP	02/22/2022	2-145-5-00-256	MEALS RESERVED 2/1-2/11	7,754.25		
2621	BOOKER TERRY	TERRY BOOKER	325910	97007 AP	02/22/2022	2-145-5-00-256	MEALS RESERVED 2/1-2/11	9,864.75		
								*** VENDOR	2621 TOTAL	17,619.00
648	COMMERCE BANK-COMMER	COMMERCE BANK-COMMERCIAL CARDS	325989	97066 AP	02/24/2022	2-145-5-00-203	COA/PALS,TNG,GRANT CONSUMABLES	160.00		
648	COMMERCE BANK-COMMER	COMMERCE BANK-COMMERCIAL CARDS	325989	97066 AP	02/24/2022	2-145-5-00-204	COA/PALS,TNG,GRANT CONSUMABLES	39.97		
648	COMMERCE BANK-COMMER	COMMERCE BANK-COMMERCIAL CARDS	325989	97066 AP	02/24/2022	2-145-5-00-208	COA/PALS,TNG,GRANT CONSUMABLES	146.59		
648	COMMERCE BANK-COMMER	COMMERCE BANK-COMMERCIAL CARDS	325989	97066 AP	02/24/2022	2-145-5-00-213	COA/PALS,TNG,GRANT CONSUMABLES	182.87		
648	COMMERCE BANK-COMMER	COMMERCE BANK-COMMERCIAL CARDS	325989	97066 AP	02/24/2022	2-145-5-00-230	FLEETHOSTER MARCH SERVICE	530.10		
648	COMMERCE BANK-COMMER	COMMERCE BANK-COMMERCIAL CARDS	325989	97066 AP	02/24/2022	2-145-5-00-246	IRON MOUNTAIN SHREDDING COA	55.95		
648	COMMERCE BANK-COMMER	COMMERCE BANK-COMMERCIAL CARDS	325989	97066 AP	02/24/2022	2-145-5-00-252	COA/PALS,TNG,GRANT CONSUMABLES	24.09		
648	COMMERCE BANK-COMMER	COMMERCE BANK-COMMERCIAL CARDS	325989	97066 AP	02/24/2022	2-145-5-00-252	COA/PALS,TNG,GRANT CONSUMABLES	12.16		
648	COMMERCE BANK-COMMER	COMMERCE BANK-COMMERCIAL CARDS	325989	97066 AP	02/24/2022	2-145-5-00-254	COA/PALS,TNG,GRANT CONSUMABLES	203.99		
648	COMMERCE BANK-COMMER	COMMERCE BANK-COMMERCIAL CARDS	325989	97066 AP	02/24/2022	2-145-5-00-254	COA/PALS,TNG,GRANT CONSUMABLES	4.42		
648	COMMERCE BANK-COMMER	COMMERCE BANK-COMMERCIAL CARDS	325989	97066 AP	02/24/2022	2-145-5-00-255	COA/PALS,TNG,GRANT CONSUMABLES	29.88		
648	COMMERCE BANK-COMMER	COMMERCE BANK-COMMERCIAL CARDS	325989	97066 AP	02/24/2022	2-145-5-00-255	COA/PALS,TNG,GRANT CONSUMABLES	23.80		
648	COMMERCE BANK-COMMER	COMMERCE BANK-COMMERCIAL CARDS	325989	97066 AP	02/24/2022	2-145-5-00-260	COA/PALS,TNG,GRANT CONSUMABLES	89.55		
648	COMMERCE BANK-COMMER	COMMERCE BANK-COMMERCIAL CARDS	325989	97066 AP	02/24/2022	2-145-5-00-345	COA/PALS,TNG,GRANT CONSUMABLES	548.28		
648	COMMERCE BANK-COMMER	COMMERCE BANK-COMMERCIAL CARDS	325989	97066 AP	02/24/2022	2-145-5-00-750	COA/PALS,TNG,GRANT CONSUMABLES	110.06		
648	COMMERCE BANK-COMMER	COMMERCE BANK-COMMERCIAL CARDS	325989	97066 AP	02/24/2022	2-145-5-00-750	COA/PALS,TNG,GRANT CONSUMABLES	269.46		
648	COMMERCE BANK-COMMER	COMMERCE BANK-COMMERCIAL CARDS	325989	97066 AP	02/24/2022	2-145-5-05-301	COA/PALS,TNG,GRANT CONSUMABLES	253.67		
648	COMMERCE BANK-COMMER	COMMERCE BANK-COMMERCIAL CARDS	325989	97066 AP	02/24/2022	2-145-5-06-301	COA/PALS,TNG,GRANT CONSUMABLES	1.84		
648	COMMERCE BANK-COMMER	COMMERCE BANK-COMMERCIAL CARDS	325989	97066 AP	02/24/2022	2-145-5-06-321	COA/PALS,TNG,GRANT CONSUMABLES	2.66		
648	COMMERCE BANK-COMMER	COMMERCE BANK-COMMERCIAL CARDS	325989	97066 AP	02/24/2022	2-145-5-07-302	COA/PALS,TNG,GRANT CONSUMABLES	33.38		
648	COMMERCE BANK-COMMER	COMMERCE BANK-COMMERCIAL CARDS	325989	97066 AP	02/24/2022	2-145-5-07-321	COA/PALS,TNG,GRANT CONSUMABLES	1.84		
648	COMMERCE BANK-COMMER	COMMERCE BANK-COMMERCIAL CARDS	325989	97066 AP	02/24/2022	2-145-5-09-100	COA/PALS,TNG,GRANT CONSUMABLES	1,060.21		
								*** VENDOR	648 TOTAL	3,784.77
516725	ENTERPRISE (ACH)	ENTERPRISE FM TRUST	325901	24	02/20/2022	2-145-5-00-230	FBN439921 FEB VEHICLE LEASE IN	5,667.43		
86	EVERGY	EVERGY KANSAS CENTRAL INC	326036	97109 AP	02/25/2022	2-145-5-00-246	ELEC SVC CO ON AGING	821.05		
21239	KS COMM NU	KANSAS COMM NUTRITION SERVICES	326108	97181 AP	02/25/2022	2-145-5-00-258	2022 ANNUAL DUES MEALS ON WHEE	150.00		
4755	LEAV PAPER	LEAVENWORTH PAPER AND OFFICE S	325939	97036 AP	02/22/2022	2-145-5-00-254	CO ON AGING KING FOR TAX PROGR	57.86		
4755	LEAV PAPER	LEAVENWORTH PAPER AND OFFICE S	325939	97036 AP	02/22/2022	2-145-5-00-301	CO ON AGING KING FOR TAX PROGR	35.88		
								*** VENDOR	4755 TOTAL	93.74
537	LEAV TIMES	LEAVENWORTH TIMES	326110	97183 AP	02/25/2022	2-145-5-00-209	ACCT 185 JOB POSTINGS	112.50		
12605	MUSHLIN, GARY	GARY MUSHLIN	325945	97042 AP	02/22/2022	2-145-5-00-750	PIANO TUNE	104.00		
6601	NUTRI SYST	NUTRI SYSTEMS CORP	325946	97043 AP	02/22/2022	2-145-5-09-200	ELECTRIC BAG HEATERS FOR MEAL	678.83		
								TOTAL FUND 145		29,264.82
648	COMMERCE BANK-COMMER	COMMERCE BANK-COMMERCIAL CARDS	325989	97066 AP	02/24/2022	2-146-5-00-218	IRON MOUNTAIN SHREDDING (426.5	54.56		
648	COMMERCE BANK-COMMER	COMMERCE BANK-COMMERCIAL CARDS	325989	97066 AP	02/24/2022	2-146-5-00-301	CO TREAS:OFFICE SUPPLIES	109.06		
648	COMMERCE BANK-COMMER	COMMERCE BANK-COMMERCIAL CARDS	325989	97066 AP	02/24/2022	2-146-5-00-301	CO TREAS:OFFICE SUPPLIES	260.11		
648	COMMERCE BANK-COMMER	COMMERCE BANK-COMMERCIAL CARDS	325989	97066 AP	02/24/2022	2-146-5-00-301	CO TREAS:OFFICE SUPPLIES	989.92		
								*** VENDOR	648 TOTAL	1,413.65
771	KANSAS COU	KANSAS CO TREASURER ASSN	326106	97179 AP	02/25/2022	2-146-5-00-203	KCTA ANNUAL DUES	250.00		
771	KANSAS COU	KANSAS CO TREASURER ASSN	326106	97179 AP	02/25/2022	2-146-5-00-203	KCTA ANNUAL DUES	10.00		
								*** VENDOR	771 TOTAL	260.00
								TOTAL FUND 146		1,673.65
648	COMMERCE BANK-COMMER	COMMERCE BANK-COMMERCIAL CARDS	325989	97066 AP	02/24/2022	2-153-5-00-401	FLEETHOSTER MARCH SERVICE	829.35		

START DATE: 02/19/2022 END DATE: 02/25/2022

TYPES OF CHECKS SELECTED: * ALL TYPES

			P.O.NUMBER	CHECK#					
516725	ENTERPRISE (ACH)	ENTERPRISE FM TRUST	325901	24	02/20/2022	2-153-5-00-401	FBN439921 FEB VEHICLE LEASE IN	18,559.35	
516725	ENTERPRISE (ACH)	ENTERPRISE FM TRUST	325901	24	02/20/2022	2-153-5-00-401	FBN439921 FEB VEHICLE LEASE IN	11,671.75-	
							*** VENDOR 516725 TOTAL		6,887.60
1755	TRUCK CENTER COMPANI	OMAHA TRUCK CENTER	325958	97055 AP	02/22/2022	2-153-5-00-3	2-1 2022 FREIGHLINER (13-04)	118,308.00	
1755	TRUCK CENTER COMPANI	OMAHA TRUCK CENTER	325958	97055 AP	02/22/2022	2-153-5-00-3	2-1 2022 FREIGHLINER (13-04)	20,000.00-	
							*** VENDOR 1755 TOTAL		98,308.00
							TOTAL FUND 153		106,024.95
648	COMMERCE BANK-COMMER	COMMERCE BANK-COMMERCIAL CARDS	325989	97066 AP	02/24/2022	2-155-5-00-403	FLEETHOSTER MARCH SERVICE	59.85	
							TOTAL FUND 155		59.85
26195	ADVANCE AUTO PARTS	GENERAL PARTS DISTRIBUTION	325902	96999 AP	02/22/2022	2-160-5-00-304	670030 DEF	40.44	
648	COMMERCE BANK-COMMER	COMMERCE BANK-COMMERCIAL CARDS	325989	97066 AP	02/24/2022	2-160-5-00-213	SOLID WASTE:HHW,PPE,EQUIP MAIN	125.20	
648	COMMERCE BANK-COMMER	COMMERCE BANK-COMMERCIAL CARDS	325989	97066 AP	02/24/2022	2-160-5-00-215	FLEETHOSTER MARCH SERVICE	58.90	
648	COMMERCE BANK-COMMER	COMMERCE BANK-COMMERCIAL CARDS	325989	97066 AP	02/24/2022	2-160-5-00-263	SOLID WASTE: OFFICE SUPPLIES,	96.33	
648	COMMERCE BANK-COMMER	COMMERCE BANK-COMMERCIAL CARDS	325989	97066 AP	02/24/2022	2-160-5-00-301	SOLID WASTE:HHW,PPE,EQUIP MAIN	106.19	
648	COMMERCE BANK-COMMER	COMMERCE BANK-COMMERCIAL CARDS	325989	97066 AP	02/24/2022	2-160-5-00-301	SOLID WASTE: OFFICE SUPPLIES,	19.65	
648	COMMERCE BANK-COMMER	COMMERCE BANK-COMMERCIAL CARDS	325989	97066 AP	02/24/2022	2-160-5-00-303	SOLID WASTE:HHW,PPE,EQUIP MAIN	84.97	
648	COMMERCE BANK-COMMER	COMMERCE BANK-COMMERCIAL CARDS	325989	97066 AP	02/24/2022	2-160-5-00-305	SOLID WASTE:HHW,PPE,EQUIP MAIN	19.96	
							*** VENDOR 648 TOTAL		511.20
516725	ENTERPRISE (ACH)	ENTERPRISE FM TRUST	325901	24	02/20/2022	2-160-5-00-215	FBN439921 FEB VEHICLE LEASE IN	931.98	
10703	TIRE TOWN	TIRE TOWN	325956	97053 AP	02/22/2022	2-160-5-00-207	SCRAP TIRES	500.00	
2007	WIRENUTS	WIRENUTS	325963	97060 AP	02/22/2022	2-160-5-00-402	TRANSFER STATION -CAMERAS/WIRI	3,600.00	
2007	WIRENUTS	WIRENUTS	325963	97060 AP	02/22/2022	2-160-5-00-402	TRANSFER STATION -CAMERAS/WIRI	1,200.00	
2007	WIRENUTS	WIRENUTS	325963	97060 AP	02/22/2022	2-160-5-00-402	TRANSFER STATION -CAMERAS/WIRI	3,674.07	
							*** VENDOR 2007 TOTAL		8,474.07
							TOTAL FUND 160		10,457.69
156	CONVERGEONE	CONVERGEONE INC	325972	10105 AP	02/23/2022	2-172-5-00-107	ARPA029 AOSLVCO0001 DUO DEPLOY	4,116.00	
3998	DREXEL TEC	DREXEL TECHNOLOGIES INC	325973	10106 AP	02/23/2022	2-172-5-00-107	ARPA030 2.1 28984 GROUP 2 SETU	65.00	
398	NETSTANDARD INC	NETSTANDARD INC	325974	10107 AP	02/23/2022	2-172-5-00-107	ARPA031 1.1 VITAL SERVICES	3,350.00	
534	SANDS CONSTRUCTION	SANDS CONSTRUCTION LLC	325975	10108 AP	02/23/2022	2-172-5-00-107	ARPA032 2.2 3021113.00 1ST FLO	191,756.00	
							TOTAL FUND 172		199,287.00
1991	MARC	MID-AMERICA REGIONAL COUNCIL	325941	97038 AP	02/22/2022	2-174-5-00-210	MARC 911 EQUIPMENT COSTSHARE	27,782.18	
							TOTAL FUND 174		27,782.18
2777	ALFRED BENESCH & CO	ALFRED BENESCH & CO	325905	97002 AP	02/22/2022	2-182-5-00-2	2-2 BR E-18 J&J SURVEY CHARGES	3,750.00	
							TOTAL FUND 182		3,750.00
2777	ALFRED BENESCH & CO	ALFRED BENESCH & CO	325905	97002 AP	02/22/2022	2-189-5-00-2	2-3 BR T-34 J&J SURVEY CHARGES	13,702.21	
1814	REGISTER OF DEEDS	LEAV CO REGISTER OF DEEDS	325949	97046 AP	02/22/2022	2-189-5-00-2	2-4 (TO) RECORDING FEES T-34	55.00	
1814	REGISTER OF DEEDS	LEAV CO REGISTER OF DEEDS	325949	97046 AP	02/22/2022	2-189-5-00-2	2-4 (TO) RECORDING FEES T-34	55.00	
1814	REGISTER OF DEEDS	LEAV CO REGISTER OF DEEDS	325949	97046 AP	02/22/2022	2-189-5-00-2	2-4 (TO) RECORDING FEES T-34	55.00	
							*** VENDOR 1814 TOTAL		165.00
							TOTAL FUND 189		13,867.21
22369	BAMFORD FI	BAMFORD FIRE SPRINKLER	326032	97105 AP	02/25/2022	2-195-5-00-4	JWO#22642 520 S 2ND FIRE ALARM	3,375.00	
22369	BAMFORD FI	BAMFORD FIRE SPRINKLER	326032	97105 AP	02/25/2022	2-195-5-00-4	JWO#22642 520 S 2ND FIRE ALARM	3,774.66	
							*** VENDOR 22369 TOTAL		7,149.66
5637	CLEARWATER ENTERPRIS	CLEARWATER ENTERPRISES,LLC	325917	97014 AP	02/22/2022	2-195-5-00-290	20642-0305A864302201 GAS SERVI	398.75	
26400	KANSAS GAS	KANSAS GAS SERVICE	325935	97032 AP	02/22/2022	2-195-5-00-290	510614745 1628631 73 GAS TRANS	185.19	

START DATE: 02/19/2022 END DATE: 02/25/2022

TYPES OF CHECKS SELECTED: * ALL TYPES

				P.O.NUMBER	CHECK#				
2	WATER DEPT	WATER DEPT	326129	97202 AP	02/25/2022	2-195-5-00-290	WATER SVC 520 S 2ND ST	44.02	
2007	WIRENUTS	WIRENUTS	325963	97060 AP	02/22/2022	2-195-5-00-4	WIRE WORK 520 S 2ND ST	4,457.03	
								TOTAL FUND 195	12,234.65
648	COMMERCE BANK-COMMER	COMMERCE BANK-COMMERCIAL CARDS	325989	97066 AP	02/24/2022	2-196-5-00-201	REDWOOD TOXICOLOGY-DRUG TESTIN	1,537.50	
1867	REDWOOD TOXICOLOGY	REDWOOD TOXICOLOGY LABORATORY	326119	97192 AP	02/25/2022	2-196-5-00-201	112368 CONFIRMATION TESTS	79.62	
								TOTAL FUND 196	1,617.12
648	COMMERCE BANK-COMMER	COMMERCE BANK-COMMERCIAL CARDS	325989	97066 AP	02/24/2022	2-197-5-00-201	SC- DIST CT TECH EQUIPMENT CR2	4,019.97	
								TOTAL FUND 197	4,019.97
648	COMMERCE BANK-COMMER	COMMERCE BANK-COMMERCIAL CARDS	325989	97066 AP	02/24/2022	2-212-5-00-2	BG CARD-PUMP WIRING,JC FLOOR/M	828.86	
648	COMMERCE BANK-COMMER	COMMERCE BANK-COMMERCIAL CARDS	325989	97066 AP	02/24/2022	2-212-5-00-3	Z FARR:EQUIP/TOOLS FOR SEWER D	32.98	
								*** VENDOR 648 TOTAL	861.84
								TOTAL FUND 212	861.84
648	COMMERCE BANK-COMMER	COMMERCE BANK-COMMERCIAL CARDS	325989	97066 AP	02/24/2022	2-218-5-00-2	Z FARR:EQUIP/TOOLS FOR SEWER D	15.99	
86	EVERGY	EVERGY KANSAS CENTRAL INC	325921	97018 AP	02/22/2022	2-218-5-00-2	ELEC SVC SEWER DIST 5	116.49	
								TOTAL FUND 218	132.48
12074	KPT&A	KANSAS PROSECUTORS TRAINING &	326107	97180 AP	02/25/2022	2-406-5-00-2	4TH QUARTER 2021 REMITTANCE	181.00	
12074	KPT&A	KANSAS PROSECUTORS TRAINING &	326107	97180 AP	02/25/2022	2-406-5-00-2	4TH QUARTER 2021 REMITTANCE	170.00	
12074	KPT&A	KANSAS PROSECUTORS TRAINING &	326107	97180 AP	02/25/2022	2-406-5-00-2	4TH QUARTER 2021 REMITTANCE	150.92	
								*** VENDOR 12074 TOTAL	501.92
								TOTAL FUND 406	501.92
2570	BOND ESCROW REFUND	MARK & RENEE L-ECUYER	326033	97106 AP	02/25/2022	2-503-5-00-2	REF ENTRANCE PERMIT STRANGER R	100.00	
								TOTAL FUND 503	100.00
268	LIFELOCK	NORTONLIFELOCK INC	325940	97037 AP	02/22/2022	2-510-2-00-941	1247233 FEBRUARY PREMIUMS	1,608.97	
8500	METLIFE	METLIFE (VISION PLAN)	325942	97039 AP	02/22/2022	2-510-2-00-944	5919453 FEBRUARY VISION PREMIU	3,883.29	
8500	METLIFE	METLIFE (VISION PLAN)	325942	97039 AP	02/22/2022	2-510-2-00-944	5919453 FEBRUARY VISION PREMIU	742.93-	
								*** VENDOR 8500 TOTAL	3,140.36
1485	RELIANCE STANDARD	RELIANCE STANDARD	325950	97047 AP	02/22/2022	2-510-2-00-962	FEB PREMIUMS GROUP LIFE/VOL GR	1,538.02	
1485	RELIANCE STANDARD	RELIANCE STANDARD	325950	97047 AP	02/22/2022	2-510-2-00-965	FEB PREMIUMS GROUP LIFE/VOL GR	2,902.02	
1485	RELIANCE STANDARD	RELIANCE STANDARD	325950	97047 AP	02/22/2022	2-510-2-00-965	FEB PREMIUMS GROUP LIFE/VOL GR	41.49	
								*** VENDOR 1485 TOTAL	4,481.53
								TOTAL FUND 510	9,230.86
								TOTAL ALL CHECKS	925,200.10

TYPES OF CHECKS SELECTED: * ALL TYPES

FUND SUMMARY

001	GENERAL	406,045.69
108	COUNTY HEALTH	9,360.64
115	EQUIPMENT RESERVE	2,266.46
118	TREASURER TECH FUND	96.98
119	ROD TECHNOLOGY	1,950.00
123	JUVENILE CRIME PREVENTION	114.00
126	COMM CORR ADULT	447.45
127	COMM CORR ADULT NON GRANT	410.94
133	ROAD & BRIDGE	59,182.75
136	COMM CORR JUVENILE	1,197.71
137	LOCAL SERVICE ROAD & BRIDGE	20,861.60
144	PALS (PETS AND LOVING SENIORS	2,399.69
145	COUNCIL ON AGING	29,264.82
146	COUNTY TREASURER SPECIAL	1,673.65
153	PUBLIC WORKS,EQUIP.RESERVE FUND	106,024.95
155	LSR CAPITAL EQUIP RESERVE	59.85
160	SOLID WASTE MANAGEMENT	10,457.69
172	AMERICAN RECOVERY PLAN	199,287.00
174	911	27,782.18
182	EASTON TWP TRAFFIC IMPACT	3,750.00
189	TONGANOXIE TWP TRAFFIC IMPACT	13,867.21
195	JUVENILE DETENTION	12,234.65
196	DRUG TEST & SUPERVISION FEES	1,617.12
197	INK FEE FUND	4,019.97
212	SEWER DISTRICT 2: TIMBERLAKES	861.84
218	SEWER DIST #5	132.48
406	ATTORNEY TRAINING	501.92
503	ROAD & BRIDGE BOND ESCROW	100.00
510	PAYROLL CLEARING	9,230.86
	TOTAL ALL FUNDS	925,200.10

Consent Agenda March 2, 2022
Checks dated 2/19/22-2/25/22

**Leavenworth County
Request for Board Action
Resolution 2022-07
Special Use Permit - Turkey Creek
Cycles**

**Date: March 2, 2022
To: Board of County Commissioners
From: Planning & Zoning Staff**

Department Head Review: Krystal Voth, Reviewed

Additional Reviews as needed:

Budget Review Administrator Review Legal Review

Action Requested: Approve Resolution 2022-07, a request for the renewal of a Special Use Permit for Turkey Creek Cycles. This is the first request for this business.

Analysis: The applicant is applying for a new Special Use Permit to operate an Auto Service Station and Repair business. The shop is located behind the residence on the property.

The proposed business is a motorcycle customization shop that does third party customization work for already built motorcycles. Some light welding and other repair work will take place within an existing detached garage, with heavier projects and painting taking place off-premises. The applicant currently has one full-time employee and one part-time employee that works on site. Customers are by appointment only and the applicant does have a gate to control access to the property. In addition to customer traffic, the applicant receives shipments but not at a rate that requires a traffic impact fee.

Planning Commission Recommendation: The Planning Commission voted 9-0 to recommend approval of Case No. DEV-21-203 (Resolution 2022-07) request for a Special Use Permit for Turkey Creek Cycles.

Alternatives:

1. Approve Resolution 2022-07, Special Use Permit for Auto Service Station and Repair for Turkey Creek Cycles, with Findings of Fact, and with or without conditions; or
2. Deny Resolution 2022-07, Special Use Permit for Auto Service Station and Repair for Turkey Creek Cycles, with Findings of Fact; or
3. Revise or Modify the Planning Commission Recommendation to Resolution 2022-07, Special Use Permit for Auto Service Station and Repair for Turkey Creek Cycles, with Findings of Fact; or
4. Remand the case back to the Planning Commission.

Budgetary Impact:

- Not Applicable
- Budgeted item with available funds
- Non-Budgeted item with available funds through prioritization
- Non-Budgeted item with additional funds requested

Total Amount Requested:
\$0.00

Additional Attachments: Staff Report, Planning Commission Minutes

*****New Request*****
Resolution 2022-07
Turkey Creek Cycles
Special Use Permit – Auto Service Station and Repair

Staff Report – Board of County Commissioners

March 2, 2022

GENERAL INFORMATION:

**Applicant/
Property Owner:** Paul and Chelsea Harper
20476 147th Street
Basehor, KS 66007

Legal Description: A tract of land in the Southwest Quarter of Section 25, Township 10 South,
Range 22 East of the 6th P.M, in Leavenworth County, Kansas.

Location: 20476 147th Street, ± 1,520 feet from Basehor, KS

Parcel Size: ± 17.5 acres

Zoning/Land Use: RR-2.5, Rural Residential 2.5-acre minimum size parcels

Comprehensive Plan: This parcel is within the Residential (3 unit/acre) land use category.

Parcel ID No.: 157-25-0-00-00-012.00

Planner: Amy Allison

REPORT:

Planning Commission Recommendation

The Planning Commission voted 9-0 to recommend approval of Case No DEV-21-203 (Resolution 2022-07), subject to the following conditions:

1. The SUP shall be limited to a period of five (5) years.
2. The business shall be limited to the hours of 6 am to 7 pm, Tuesday through Friday.
3. The SUP shall be limited to one full-time and one part-time, off-premises employees.
4. The applicant shall adhere to the following memorandums:
 - a. Chuck Magaha – Emergency Management, January 6, 2022
 - b. Mike Fulkerson – Consolidated Water District #1, December 20, 2021
5. No signage is allowed in the right-of-way. A wall sign is requested with the request and a sign permit will be required. All signage shall comply with Article 25, Sign Regulations of the Leavenworth County Zoning and Subdivision Regulations.
6. No on-street parking shall be allowed.
7. Applicant shall not store equipment, parts, materials or junk vehicles outside.
8. Applicant shall properly dispose of used oils and parts.
9. There shall be no on-site retail sales.
10. Outdoor storage of vehicles, including motorcycles, related to the business is limited to no more than 5 vehicles.

11. This SUP shall be limited to the Narratives dated December 16, 2021, January 4, 2022 and January 11, 2022 submitted with this application.

12. This SUP shall comply with all local, state, and federal rules and regulations that may be applicable. After approval of this SUP by the Board of County Commission all conditions listed shall be adhered to and copies shall be provided to the Planning and Zoning Department within 30 days.

Request

The applicant is requesting a Special Use Permit for a Motorcycle Custom Shop.

Adjacent Land Use

The surrounding properties are residences and farms on varying sized parcels ranging from 1 acre to over 75 acres in size.

Flood Plain

There are no Special Flood Hazard Areas on this parcel per FEMA Firm Map 20103C0243G July 16, 2015.

Utilities/Services

Sewer: Private septic system

Fire: Fairmount

Water: Consolidated Water District #1

Electric: Evergy

Access/Streets

The property is accessed by 147th Street, a County Collector with a paved surface ± 30' wide.

Agency Comments

See attached comments – Email – Kyle Anderson – Planning and Zoning, December 20, 2021

See attached comments – Email – Lauren Anderson – Public Works, December 21, 2021

See attached comments – Memo – Chuck Magaha – Emergency Management, January 6, 2022

See attached comments – Memo – Mike Fulkerson – Consolidated Water District #1, December 20, 2021

Factors to be considered

The following factors are to be considered by the Planning Commission and the Board of County Commission when approving or disapproving this Special Use Permit request:

1. Character of the neighborhood: Though the neighborhood is rural; primarily rural residences, and agricultural uses, the property is located along the eastern edge of the city of Basehor where development is anticipated.
2. Zoning and uses of nearby property: The surrounding properties are zoned RR-2.5, Rural Residential 2.5-acre minimum size parcels. The uses are rural residences and agricultural.
3. Suitability of the property for the uses to which it has been restricted: The property is within an area suited for rural residences and agricultural use. The use is allowed with approval of a Special Use Permit
4. Extent to which removal of the restrictions will detrimentally affect nearby property: The area will not likely be detrimentally affected.
5. Length of time the property has been vacant as zoned: The property is not vacant.
6. Relative gain to economic development, public health, safety and welfare: The proposal would allow another business to operate within Leavenworth County and will likely not be detrimental to the public health, safety and welfare.
7. Conformance to the Comprehensive Plan: The Future Land Use Map indicates this area as Residential (3 units/acre).
8. Staff recommendation is for denial of Special Use Permit.

Staff Comments

The Planning & Zoning Department was notified that a business was operating on the property. A letter was sent to the property owner that a Special Use Permit would be required for the business operation. The property owner quickly contacted the office and submitted the required application and has been actively working with staff.

The proposed business is a motorcycle customization shop that does third party customization work for already built motorcycles. Some light welding and other repair work will take place within an existing detached garage, with heavier projects and painting taking place off-premises. The applicant currently has one full-time employee and one part-time employee that works on site. Customers are by appointment only and the applicant does have a gate to control access to the property. In addition to customer traffic, the applicant receives shipments but not at a rate that requires a traffic impact fee. Due to the Comprehensive Plan Designation, staff is not in support of approval.

LOCATION	
Adjacent Residences	Adjacent residences are rural-suburban uses. Surrounding properties range from approximately 1 acre to 77 acres.
Adjacent Zoning/Uses	Zoning in the area is RR-2.5 and are used primarily as rural residences and agricultural uses. A church is located to the west of the property.
Density	The area is not densely populated.
Nearby City Limits	The city of Basehor is approximately ¼ of a mile to the southwest of the property.
Initial Growth Management Area	The property is not located within a Growth Management Area.

IMPACT	
Noise Pollution	This use will not cause prolonged noise pollution. The applicant indicated that the repair work will take place inside of the detached garage. Most audible noise will be limited to the loading and unloading of motorcycles on the premises. Some light noise may be heard from equipment used on the property, but this will take place inside.
Traffic	The use will create additional traffic in the morning and evening and light traffic throughout the day. The application states that one full-time employee will work on-site and one part-time employee as needed. Customers are by appointment only, limiting customer trip generation. The applicant anticipated two customers per day, Tuesday through Friday.
Lighting	The applicant is not requesting lighting.
Outdoor Storage	The applicant indicated that there will be no outdoor storage for the business.
Parking	The applicant has ample parking space for employees.
Visitors/Employees	The application states that one full-time employee will work on-site and one part-time employee, as needed. Customers are by appointment only. The applicant anticipated two customers per day, Tuesday through Friday.
Waste	The business will generate oil waste, which will be disposed of every two weeks by a third party.

SITE COMPATABILITY	
Size of Parcel	The parcel is 17.5 acres in size.
Zoning of Parcel	The parcel is zoned Rural Residential-2.5
Buildings (Existing & Proposed)	The applicant has a shop on the property that is approximately 30'x80'. Tools and equipment for the business are stored in the shop
Setbacks	Existing building meet the required setbacks.
Screening	The property has some landscaping along the north and south property lines.

ACTION OPTIONS:

1. Approve Resolution 2022-07, Special Use Permit for Auto Service Station and Repair for Turkey Creek Cycles, with Findings of Fact, and with or without conditions; or
2. Deny Resolution 2022-07, Special Use Permit for Auto Service Station and Repair for Turkey Creek Cycles, with Findings of Fact; or
3. Revise or Modify the Planning Commission Recommendation to Resolution 2022-07, Special Use Permit for Auto Service Station and Repair for Turkey Creek Cycles, with Findings of Fact; or
4. Remand the case back to the Planning Commission.

ATTACHMENTS:

Narrative
Location/Aerial Maps
Memorandums

SPECIAL USE PERMIT APPLICATION

Leavenworth County Planning Department
300 Walnut, St., Suite 212
County Courthouse
Leavenworth, Kansas 66048
913-684-0465

SCANNED

Turkey Creek Cycles

APPLICANT/AGENT INFORMATION	OWNER INFORMATION (If different)
NAME <u>PAUL + CHELSEA HARPER</u>	NAME _____
ADDRESS <u>20476 147th STREET</u>	ADDRESS _____
CITY/ST/ZIP <u>BASEHOR / KS / 66007</u>	CITY/ST/ZIP _____
PHONE <u>913-233-9707</u>	PHONE _____
EMAIL <u>TURKEYCREEKCYCLES@gmail.com</u>	EMAIL _____
CONTACT PERSON <u>PAUL HARPER</u>	CONTACT PERSON _____

PROPERTY INFORMATION

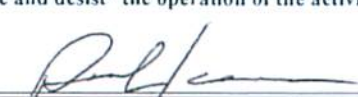
PID: 052-157-25-0-00-00-012.00-0 Zoning District: RR 2.5

Address of property 20476 147th STREET Parcel size 17.50

Current use of the property RESIDENCE

Does the owner live on the property? Yes No

I, the undersigned am the (circle one) owner, duly authorized agent, of the aforementioned property situated in the unincorporated portion of Leavenworth County, Kansas. By execution of my signature, I do hereby officially apply for a Special Use Permit as indicated above. I hereby agree to "cease and desist" the operation of the activity upon denial of the permit by the Board of County Commissioners.

Signature  Date 11/21/21

458
25 10 22
Fairmount Energy
RWD cons. #1
CK1221

ATTACHMENT A

PROPOSED SPECIAL USE PERMIT INFORMATION

Name of Business TURKEY CREEK CYCLES

Existing and Proposed Structures GARAGE / SHOP BUILDING, DETACHED

Number of structures used for Special Use Permit ONE

Will the use require parking? Yes No How many parking spaces are proposed/available? VERY ADEQUATE ONLY 2 ARE NEEDED

Is the proposed use seasonal? Yes No
If yes, what months will the use be active? _____ through _____
Month Month

Reason for requesting a Special Use Permit: OPERATING MOTORCYCLE CUSTOM SHOP

Estimated Traffic

In this section, you are determining the impact your proposed use will have on the county roadways. A vehicle visiting your site is to be considered two trips because the visitor/employee/user will use the roadways twice. If you are planning to expand the use that may generate additional traffic during the duration of the permit, provide the traffic generation for the full expansion.

How many total Passenger vehicle trips (both entering and exiting) will be generated by the Special Use Permit?
Daily 6-8 (4 DAYS/WEEK) Weekly 24-32 Monthly 96-128

If applicable, how many total Commercial (delivery, heavy trucks, equipment, etc.) vehicle trips (both entering and exiting) will be generated by the Special Use Permit?
Daily 1-2 Weekly 2-4 Monthly 8-12

If applicable, describe Seasonal trips not accounted for above: What type (Passenger and Commercial) vehicle trips, how many trips per vehicle type in the seasonal timeframe, and describe the seasonal time frame (months, weeks, or days in a calendar year.

Passenger: Months _____ Weeks _____ Days _____
Commercial: Months _____ Weeks _____ Days _____

When are trips to the site expected to occur (i.e. throughout the day, limited certain hours, etc.)? If applicable, separate occurrences by vehicle type (Passenger, Commercial, Seasonal Passenger, and Seasonal Commercial):

What is the anticipated route(s) from the nearest State Highway to the Site? 147th STREET, LEVENWORTH RD.

Special Use Permit Renewal

Describe any change to operations since the SUP was last issued including traffic trips compared to this SUP:

Have you added any buildings since the SUP was last issued? Yes No Any parking? Yes No

Allison, Amy

From: Turkey Creek Cycles <turkeycreekcycles@gmail.com>
Sent: Wednesday, December 22, 2021 3:44 PM
To: PZ
Subject: SUP Turkey Creek Cycles

Notice: This email originated from outside this organization. Do not click on links or open attachments unless you trust the sender and know the content is safe.

Parcel #157-25-0-00-00-12.00
Case #VIO-21-031

To Whom It May Concern,

It has come to our attention that we are required to receive a special use permit in order to operate our small motorcycle shop (Turkey Creek Cycles) at our property, 20476 147th St, Basehor KS 66007.

A brief description of Turkey Creek Cycles:

Established in 2008 in Merriam, KS, we are a Harley Davidson custom work and repair shop. We specialize in customizing our client's existing motorcycles, and maintain the bikes for them. We do light welding and fabrication, outsource machining, and outsource all paint and bodywork. Our work is done by appointment only and we schedule jobs accordingly within our 4 day work week (Tuesday through Friday 8am-5pm). We average 4 customers a day depending on what is scheduled and with the help of our one full time employee, we are able to complete the work. We collect and remit sales tax according to Kansas state law and this is filed timely each month through our accountant TaxesPlus, Inc in Shawnee, KS.

Included with this letter are 4 references, mainly immediate neighbors who can attest to the professionalism and respect that we have for our property and to those around us.

- 1.
- 2.
3. Pastor Robert Weinkauf, Risen Savior Lutheran Church, west side neighbor
- 4.
- 5.
- 6.
7. Rick and Crystal Hopper, south side neighbor
- 8.
- 9.
- 10.
11. Jeff & Becky Belle, north side neighbor
- 12.
- 13.
- 14.
15. State Representative Timothy Johnson
- 16.

We appreciate this opportunity to present our case and wish to be approved for the special use permit.

Sincerely,

Paul & Chelsea Harper
20476 147th St, Basehor KS 66007

--

Paul Harper
Turkey Creek Cycles
5809 Merriam Drive
Merriam, KS 66203
(913) 432-4041

Allison, Amy

From: Turkey Creek Cycles <turkeycreekcycles@gmail.com>
Sent: Tuesday, January 4, 2022 9:08 AM
To: Allison, Amy
Subject: [QUAR] SUP
Attachments: (no subject).eml

Importance: Low

Notice: This email originated from outside this organization. Do not click on links or open attachments unless you trust the sender and know the content is safe.

Amy,
We verified today, 1/3/22, that the tax clearance request will be sent this week. For status update on their approval of the letter being sent, the ID is THT4-AXB6-GDPE and can be verified here: <https://www.kdor.ks.gov/apps/TaxClearance/>

Sign- Attached is the only sign that we plan to use. It's a 20"x 15' shadow box aluminum sign affixed to our garage.

Chemicals- We use basic chemicals such as aerosol lubricants and cleaners that are stored in metal cabinets inside the shop.

Emergency plan- There are battery backup lighted exit signs above the exterior doors.

Storage- We do not store anything outside that pertains to the business.

Thanks,
Paul and Chelsea Harper
Turkey Creek Cycles
20476 147th Street
Basehor, KS 66007
(913) 432-4041



Allison, Amy

From: Turkey Creek Cycles <turkeycreekcycles@gmail.com>
Sent: Tuesday, January 11, 2022 9:07 AM
To: Allison, Amy
Subject: SUP Update
Attachments: TaxClearanceCertificate.pdf

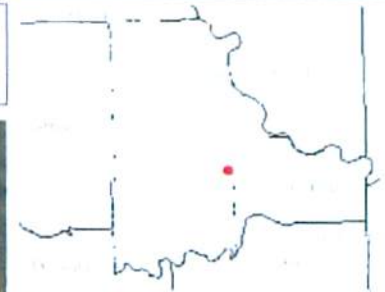
Notice: This email originated from outside this organization. Do not click on links or open attachments unless you trust the sender and know the content is safe.

Amy,
I have included the tax clearance certificate below. To address the emergency plan, I have purchased a weather radio to keep in the shop, battery backup exit signs for the exterior doors, and have a sign maker building an emergency plan sign for the inside of the building, and a contact sign for the exterior.

The disposal of the used oil is picked up bi-weekly by Rodina Company to be recycled for heating oil.

Thank You,
Paul Harper
Turkey Creek Cycles
20476 147th Street
Basehor, KS 66007
(913) 432-4041

Turkey Creek Cycles Site Plan



- Legend**
- Address Point
 - Parcel Number
 - Lot Line
 - Parcel
 - ⋮ City Limit Line
 - Major Road
 - Yellow line: All other values
 - Yellow line: 70'
 - Road
 - + Railroad
 - Section
 - Red box: Section Boundaries
 - White box: County Boundary

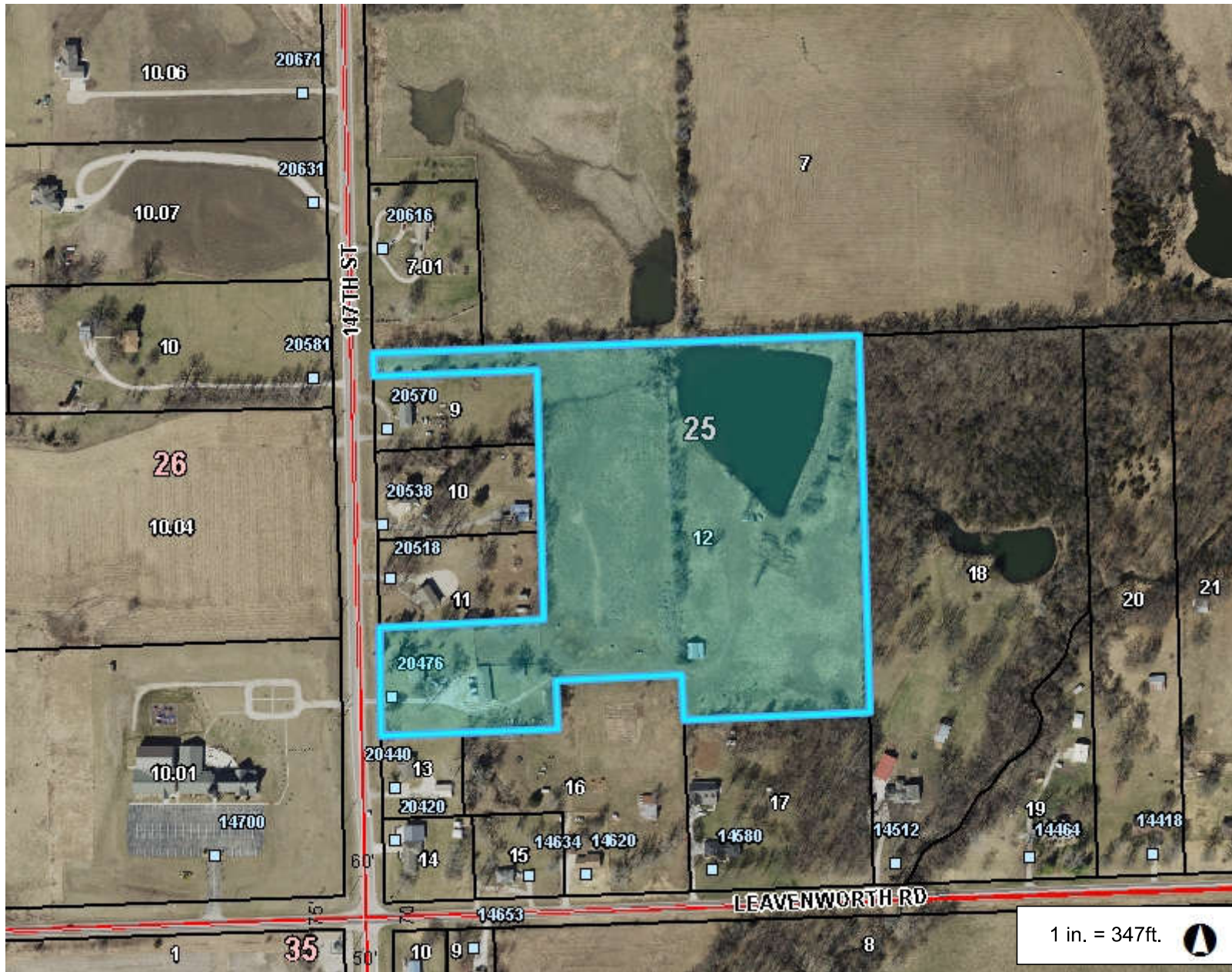
SCANNED

Notes

This Cadastral Map is for informational purposes only. It does not purport to represent a property boundary survey of the parcels shown and shall not be used for conveyances or the establishment of property boundaries.

THIS MAP IS NOT TO BE USED FOR NAVIGATION

DEV-21-203 Special Use Permit



Legend

- Address Point
- Parcel Number
- Lot Line
- Parcel
- ⋮ City Limit Line
- Major Road
- <all other values>
- 70
- Road
- + Railroad
- Section
- ▭ Section Boundaries
- ▭ County Boundary

Notes

Turkey Creek Cycles

694.7 0 347.36 694.7 Feet

This Cadastral Map is for informational purposes only. It does not purport to represent a property boundary survey of the parcels shown and shall not be used for conveyances or the establishment of property boundaries.

THIS MAP IS NOT TO BE USED FOR NAVIGATION

Allison, Amy

From: Anderson, Kyle
Sent: Monday, December 20, 2021 8:14 AM
To: Allison, Amy
Subject: RE: RE: DEV-21-203 Special Use Permit– Turkey Creek Cycles

We were notified of a business operating on this property. A letter was sent out informing the property owners of this. They quickly contacted our office and began the process to become compliant with our regulations.

Kyle Anderson
Environmental Technician/Code Enforcement
Leavenworth County Planning & Zoning
300 Walnut St. Ste. 212
Leavenworth, KS 66048
913-684-1084

From: Allison, Amy
Sent: Friday, December 17, 2021 12:29 PM
To: Magaha, Chuck <cmagaha@lvsheriff.org>; Anderson, Kyle <KAnderson@leavenworthcounty.gov>; Miller, Jamie <JMiller@leavenworthcounty.gov>; Patzwald, Joshua <jpatzwald@lvsheriff.org>; Van Parys, David <DVanParys@leavenworthcounty.gov>; 'MPLeak@olsson.com' <MPLeak@olsson.com>; Anderson, Lauren <LAnderson@leavenworthcounty.gov>; 'lingenfelserm@fairmountfd.org' <lingenfelserm@fairmountfd.org>; 'Tyler.Rebel@westarenergy.com' <Tyler.Rebel@westarenergy.com>; 'mfulkerson@crwd1.com' <mfulkerson@crwd1.com>
Cc: PZ <PZ@leavenworthcounty.gov>
Subject: RE: DEV-21-203 Special Use Permit– Turkey Creek Cycles

Good Afternoon,

The Department of Planning and Zoning has received an application for a Special Use Permit regarding an Auto Service Station and Repair (Motorcycle Custom Garage) at 20476 147th Street, Basehor KS.

The Planning Staff would appreciate your written input in consideration of the above request. Please review the attached information and forward any comments to us by Tuesday, December 28, 2021.

If you have any questions or need additional information, please contact me at (913) 684-0465 or at Aallison@LeavenworthCounty.Gov

Thank you,

Amy Allison, AICP
Deputy Director
Planning & Zoning
Leavenworth County
913.364.5757

Allison, Amy

From: Mitch Pleak <mpleak@olsson.com>
Sent: Wednesday, December 22, 2021 7:03 AM
To: Allison, Amy; Voth, Krystal
Cc: Noll, Bill; Anderson, Lauren; 019-2831
Subject: FW: DEV-21-203 Special Use Permit– Turkey Creek Cycles

Notice: This email originated from outside this organization. Do not click on links or open attachments unless you trust the sender and know the content is safe.

Amy,
Lauren and I have reviewed the application. Application does not require additional studies per the TIF policy. No further comments.

Thanks,

Mitch Pleak, PE

Project Engineer / Civil

D 913.748.2503

7301 W. 133rd Street, Suite 200
Overland Park, KS 66213
O 913.381.1170



Follow Us: Facebook / Twitter / Instagram / LinkedIn / YouTube

[View Legal Disclaimer](#)

From: Allison, Amy <AAllison@leavenworthcounty.gov>
Sent: Friday, December 17, 2021 12:29 PM
To: Magaha, Chuck <cmagaha@lvsheriff.org>; Anderson, Kyle <KAnderson@leavenworthcounty.gov>; Miller, Jamie <JMiller@leavenworthcounty.gov>; Patzwald, Joshua <jpatzwald@lvsheriff.org>; Van Parys, David <DVanParys@leavenworthcounty.gov>; Mitch Pleak <mpleak@olsson.com>; Anderson, Lauren <LAnderson@leavenworthcounty.gov>; 'lingenfelsem@fairmountfd.org' <lingenfelsem@fairmountfd.org>; 'Tyler.Rebel@westarenergy.com' <Tyler.Rebel@westarenergy.com>; 'mfulkerson@crwd1.com' <mfulkerson@crwd1.com>
Cc: PZ <PZ@leavenworthcounty.gov>
Subject: RE: DEV-21-203 Special Use Permit– Turkey Creek Cycles

Good Afternoon,

The Department of Planning and Zoning has received an application for a Special Use Permit regarding an Auto Service Station and Repair (Motorcycle Custom Garage) at 20476 147th Street, Basehor KS.

The Planning Staff would appreciate your written input in consideration of the above request. Please review the attached information and forward any comments to us by Tuesday, December 28, 2021.

If you have any questions or need additional information, please contact me at (913) 684-0465 or at Aallison@LeavenworthCounty.Gov

Thank you,

Amy Allison, AICP
Deputy Director
Planning & Zoning
Leavenworth County
913.364.5757

MEMO

To: Krystal Voth
From: Chuck Magaha
Subject: Turkey Creek Cycles
Date: January 6, 2022

Krystal, I have reviewed the special use permit for the operation of the repair operation of Motorcycle repair business submitted by Paul and Chelsea Harper. I would ask that a sign within in the shop/resident be posted stating emergency procedures in the event of severe weather, fire or medical emergency events for employee identification even though he is a one man shop he might need to expand in the future. A tone alert weather radio should be recommended at the site to alert of severe weather. A sign posted on the outside of the building or facility for emergency contacts for responders to make contact in the event an emergency should occur after hours. The proper disposal of used equipment fluids should be addressed by the applicant. I have no further comments at this time. If you have any questions please call me at 684-0455.

December 20, 2021

Amy Allison, AICP
Deputy Director
Leav. Co. Planning & Zoning
300 Walnut
Leavenworth, KS 66048

Re: Turkey Creek Cycles Dev-21-203 SUP

Dear Ms. Allison,

The above-mentioned SUP application is in the service area of Consolidated Water District #1.

After reviewing the SUP application, the Water District makes the following comments;

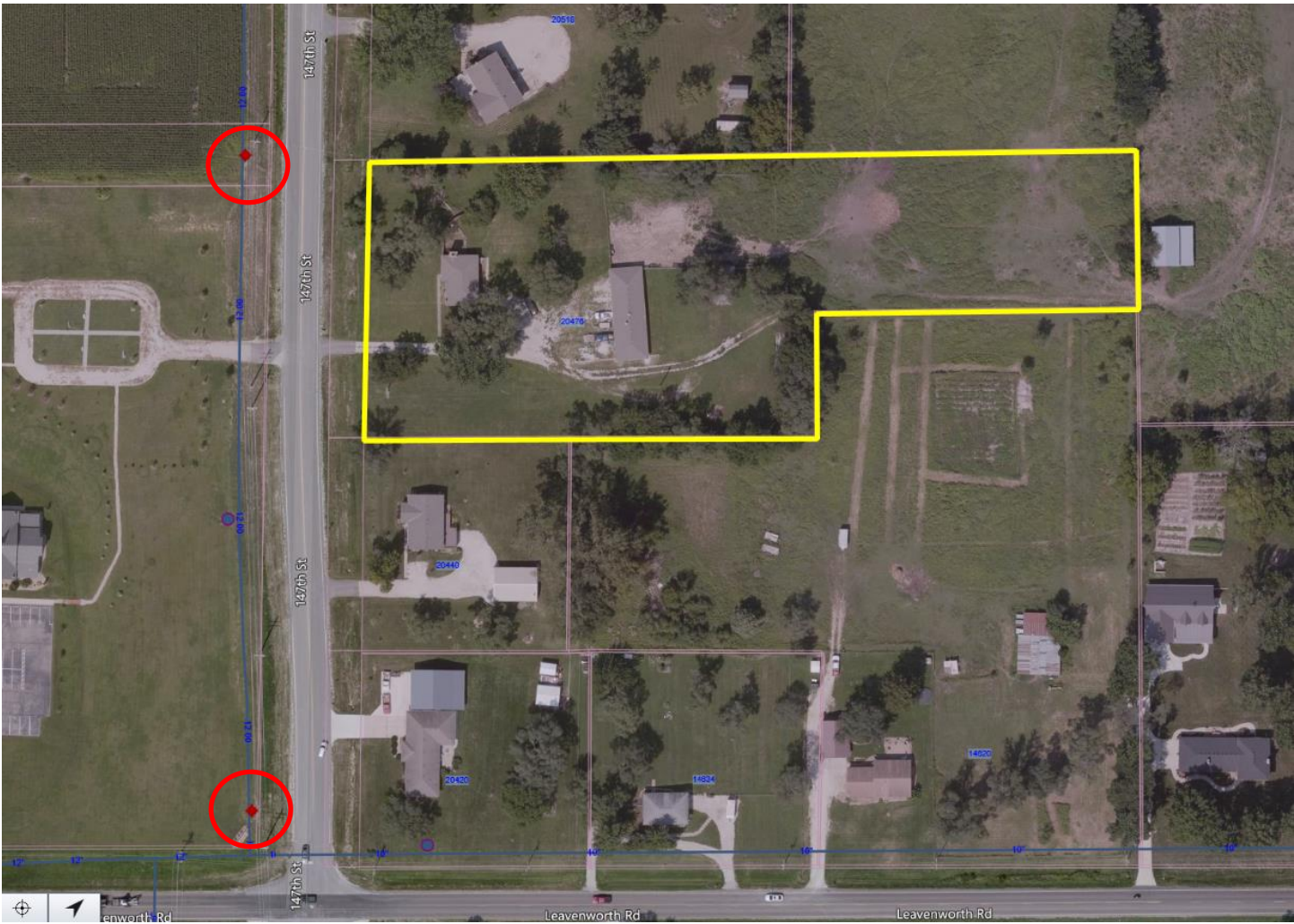
1. The property requesting the SUP is not currently a customer of the Water District, therefore, they must use a well for their domestic water service.
2. The Water District does have an existing 12-inch water main along the west side of 147th St. that is capable of supplying all domestic water needs for the proposed SUP if desired by the applicant. (see attached map).
3. The closest fire hydrant to the proposed development is located across the street (180 feet away) and at the intersection of 147th & Leavenworth Rd (433 feet away). See map for fire hydrant locations.
4. If the applicant chooses to establish water service with the Water District, policies in place at the time of application will be followed for domestic water service connections.

Should you have further questions or comments, please feel free to contact us at your convenience. We are certainly looking forward to serving this development and its future homeowners.

Respectfully,

Mike Fulkerson
Operations Manager

Cc; file



Fire Hydrant Location

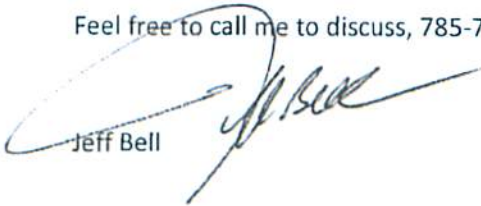
To whom it may Concern:

SCANNED

My name is Jeff Bell and I live at 20518 147th Street. My wife and I are the next-door neighbors to Paul and Chelsea Harper. It has come to our attention that there is a question if the Harper's small home business is impacting the living or traffic in the area. The answer is no, in that we have never seen or heard anything that would lead us to know there is a business in place.

My wife is home 2 days per work week and didn't know they moved their business to the property yet. Covid has changed the world obviously and many people are now working from home. From our perspective this small business is not visible, noisy or increasing traffic in the area. We are happy to see honest people taking advantage of our freedoms and being productive members of society vs taking advantage of Covid handouts.

Feel free to call me to discuss, 785-764-3081.


Jeff Bell

SCANNED

To Whom it may Concern:

We are neighbors of Paul Harper. Since moving in he has fixed up the property and home along with all of the improvements there have been no disturbances.

The Harpers are great neighbors and we are happy to have them living next door.

Sincerely,
Richard and Crystal Hooper
20440 47th St
Basehor KS 66007

Risen Savior Lutheran Church



14700 Leavenworth Road, Basehor, KS, 66007 913-724-2900 risensaviorlcms.org

Celebrating the unchanging truth of God's Word and Sacraments. Sharing the message of our risen Savior.

November 20, 2021

SCANNED

Reference: Harper residence
20476 147th St.
Basehor, KS 66007

To Leavenworth County Planning and Zoning:

Risen Savior Lutheran Church owns 40 acres of land directly East of the Harper residence at 20476 147th Street and are the only neighbors on that side of the road to their residence. I have been asked to provide any feedback or observations to your Board.

As a church that highly values a peaceful, beautiful setting, we have never had any occurrences of issues from the Harper residence. Our church facility has staff and activities approximately 70 hours every week on-site and there has never been any issues, nor any noise or disturbance, nor have we seen any increase in traffic at the Harper residence. In meeting the Harper couple that lives there I have only found them to be very respectful and hospitable people. I would consider them to be exceptional neighbors.

Sincerely,

Rev. Robert Weinkauff
Pastor, Risen Savior Lutheran Church
pastor@risensaviorlcms.org

STATE OF KANSAS
HOUSE OF REPRESENTATIVES

STATE CAPITOL
TOPEKA, KS 66612
(785) 296-7677
timothy.johnson@house.ks.gov



15958 151ST STREET
BONNER SPRINGS, KANSAS 66012
(913) 728-2024

TIMOTHY H. JOHNSON
38TH DISTRICT

November 19, 2022

Kyle Anderson
Code Enforcement
Leavenworth County, Ks

RE: Turkey Creek Cycles (Case #VIO-21-031)

Dear Leavenworth County Planning Commission:

I am writing in support of allowing a Special Use Permit for the property located at 20476 147th Street, Leavenworth County, Kansas. Paul Harper is the owner of the property and is the operator of Turkey Creek Cycles, a business he has operated for over 14 years in another location.

This property on 147th Street is very appropriate for the type of business to be operated by Mr. Harper and with 17 plus acres provides appropriate space without any interference to neighbors along that corridor. His shop area is consistent with several other such facilities in and around his location. He and his staff maintain a clean working environment which is almost unnoticeable from the street.

It is important to note that Mr. Harper developed an excellent business reputation while his business was located in another community to the east of Leavenworth County. They will be an economic boost to our tax base.

Therefore I highly recommend a Special Use Permit be granted for Paul Harper at the above location

Respectfully,

A handwritten signature in black ink that reads "Timothy H. Johnson". The signature is fluid and cursive, written over the printed name below it.

Timothy H. Johnson

CC: Paul Harper

Leavenworth County planning and Zoning Department.

Re: DEV-21-203, Special Use Permit for Turkey Creek Cycles.

I am writing this letter to voice concerns I have regarding the special Use Permit for, Turkey Creek Cycles to operate an Auto Service Station and Repair use. I am very much opposed to this type of facility being operated out of a backyard building, in my neighborhood. This has been going on for months and I feel like it should have been addressed before ever getting started. I just built a new home to the north of the proposed business. Had I known this would have been allowed to happen I don't think I would have invested in the neighborhood. I don't feel like this type of business would be allowed in any residential neighborhood.

I am concerned with the value of my investment with a business like this being forced into a quiet neighborhood. The traffic is also a concern, everyone that misses the turn unable to find this backyard business realize they miss it and use all the neighbor driveways as a turnaround point. The Noise is also a large concern for the neighborhood, the people coming and leaving the business are testing their newly tuned motorcycles using 147th street as their personal dyno. Everyone that comes and goes from the business are concerned with making as much noise as possible to show off their custom motorcycles.

I don't feel like anyone would volunteer to have this type of business added to their neighborhood. With the amount of commercial real estate available in the county, I think there would be more appropriate areas to establish this kind of business. This is not a start up business that is trying to get their feet on the ground and get started to move up to a commercial property as business improves. They have been in business for years and have moved into Leavenworth County and opened a business with blatant disregard to the requirements to do so properly. A look at their website let you know that the business is already established at this location. A business owner should have gotten all the information and permits and rezoning long before they ever opened their doors.

Respectfully,



Tom Bowers

Concerned Neighbor

RESOLUTION 2022-07

A resolution of the Leavenworth County Kansas Board of County Commission, issuing a Special Use Permit for an Auto Service Station and Repair– Turkey Creek Cycles on the following described property:

A tract of land in the Southwest Quarter (SW/4) of Section Twenty-Five (25), Township Ten (10), Range Twenty-Two (22) of the 6th P.M. of Leavenworth County, Kansas.

WHEREAS, it is hereby found and determined that a request for a Special Use Permit as described above was filed with the Secretary of the Leavenworth County Planning Commission, on the 16th day of December, 2021, and

WHEREAS, it is hereby found that the Leavenworth County Planning Commission, after notice as required by law, did conduct a public hearing upon the granting of such request for a Special Use Permit on the 9th day of February, 2022; and

WHEREAS, it is hereby found that the Leavenworth County Planning Commission, based upon specific findings of fact incorporated by reference herein, did recommend that the Special Use Permit be approved, subject to special conditions as set forth; and

WHEREAS, the Board of County Commission considered, in session on the 2nd day of March, 2022, the recommendation of the Leavenworth County Planning Commission.

NOW, THEREFORE, BE IT RESOLVED by the Board of County Commission of Leavenworth County, Kansas, that:

1. Based upon the recommendation and findings of fact of the Leavenworth County Planning Commission; and,
2. Based upon the findings of fact adopted by the Board of County Commission in regular session on the 2nd day of March, 2022, and incorporated herein by reference;

That Case No. DEV-21-203, Special Use Permit for an Auto Service Station and Repair– Turkey Creek approved subject to the following conditions:

1. The SUP shall be limited to a period of five (5) years.
2. The business shall be limited to the hours of 6 am to 7 pm, Tuesday through Friday.
3. The SUP shall be limited to one full-time and one part-time, off-premises employees.
4. The applicant shall adhere to the following memorandums:
 - a. Chuck Magaha – Emergency Management, January 6, 2022
 - b. Mike Fulkerson – Consolidated Water District #1, December 20, 2021
5. No signage is allowed in the right-of-way. A wall sign is requested with the request and a sign permit will be required. All signage shall comply with Article 25, Sign Regulations of the Leavenworth County Zoning and Subdivision Regulations.
6. No on-street parking shall be allowed.
7. Applicant shall not store equipment, parts, materials or junk vehicles outside.

8. Applicant shall properly dispose of used oils and parts.
9. There shall be no on-site retail sales.
10. Outdoor storage of vehicles, including motorcycles, related to the business is limited to no more than 5 vehicles.
11. This SUP shall be limited to the Narratives dated December 16, 2021, January 4, 2022 and January 11, 2022 submitted with this application.
12. This SUP shall comply with all local, state, and federal rules and regulations that may be applicable. After approval of this SUP by the Board of County Commission all conditions listed shall be adhered to and copies shall be provided to the Planning and Zoning Department within 30 days. This SUP shall comply with all local, state, and federal rules and regulations that may be applicable. After approval of this SUP by the Board of County Commission all conditions listed shall be adhered to and copies shall be provided to the Planning and Zoning Department within 30 days.

located in Section 25, Township 10 South, Range 22, also known as 20476 147th Street, parcel no. 157-25-0-00-00-012.00 in Leavenworth County, Kansas.

Adopted this 2nd day of March, 2022
Board of County Commission
Leavenworth, County, Kansas

Mike Smith, Chairman

ATTEST

Jeff Culbertson, Member

Janet Klasinski

Vicky Kaaz, Member

Doug Smith, Member

Mike Stieben, Member